

在使用缝纫机之前请阅读本使用说明书。
请将本使用说明书放在便于查阅的地方保管。



高速直驱双针角缝机

ZJ8450系列

HIGH SPEED MOTOR BULIT-IN TWIN
NEEDLE LOCKSTITCH SEWING MACHINE

零件手册

PARTS BOOK



手机官网



官方订阅号

浙江中捷缝纫科技有限公司
ZOJE SEWING MACHINE CO.,LTD

零件手册使用说明

1. 本手册适用于封面上所示同种系列的缝纫机。
2. 本手册为 2024 年 11 月的版本。
3. 部分零件设计上的改变不预先通知用户。
4. 用□□标注部分属于组件部分。

目 录

A. 机壳部件	1	I. 旋梭机构	17
B. 上轴机构	3	J. 下轴机构	19
C. 针杆机构	5	K. 过线压线机构	21
D. 针杆切换操作部件	7	L. 润滑机构	23
E. 压脚机构	9	Z1. 附件部分	26
F. 送料机构	11	Z2. 附件部分	28
G. 送料轴机构	13	Wa. 警告标志	30
H. 针组零件	15		

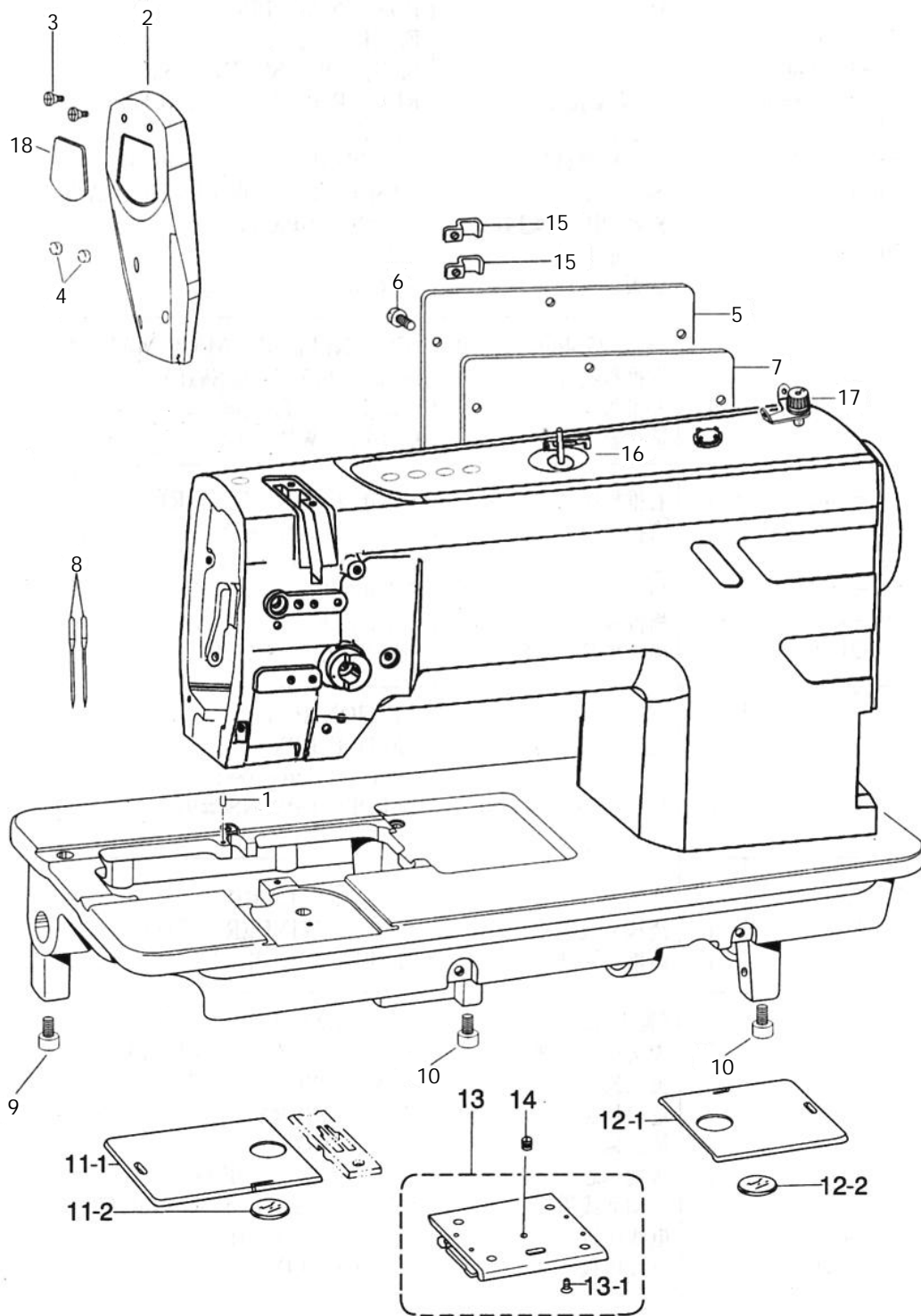
Notes for using this parts book

1. This book is applicable to sewing machines which have the same plate number as shown on the cover of this book (or correction sheet).
2. This book was prepared based on information available in November 2024.
3. Parts are subject to changes in design without prior notice.
4. Parts supplied as complete assemblies are circled by a dotted line □□.

CONTENTS

A. Machine body	1	I. Rotary mechanism	17
B. Upper shaft mechanism . . .	3	J. Lower shaft mechanism . . .	19
C. Needle level mechanism . . .	5	K. Over line press mechanism . .	21
D. Needle lever switching operating unit	7	L. Lubricating mechanism . . .	23
E. Presser foot mechanism . . .	9	Z1. Accessories	26
F. Feed mechanism	11	Z2. Accessories	28
G. Feed shaft mechanism . . .	13	Wa. Warning labels	30
H. Gauge parts	15		

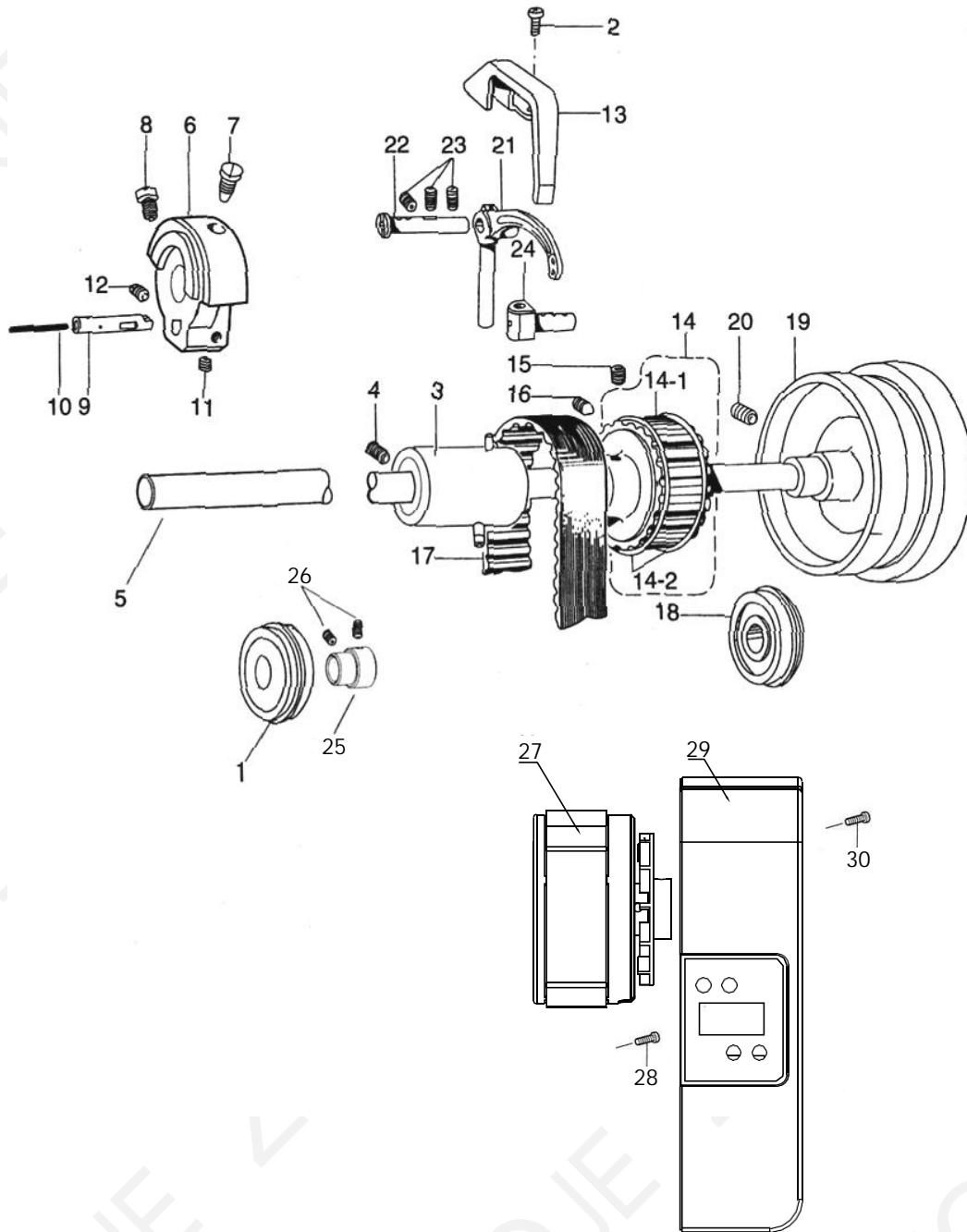
A 机壳部件/Machine body



A 机壳部件/Machine body

序号 No.	件号 Pars No.	名称	Description	数量 Number
1	10013612	针板销	FALLER PIN	1
2	20003660	面板	FACE PLATE	1
3	10006556	面板螺钉	SCREW, FACE PLATE	3
4	10008977	面板橡胶塞	RUBBER PLUG FOR FACE PLATE	2
5	20003546	侧盖板(喷漆)	SIDE COVER PLATE	1
6	10013647	侧盖板螺钉	SCREW, SIDE COVER PLATE	6
7	10013362	侧盖板垫	GASKET OF SIDE COVER PLATE	1
8	10036288	机针 DP×5(14#)	NEEDLE DP×5(14#)	2
9	10060233	底板前支柱螺钉	SCREW	1
10	10060234	底板后支柱螺钉 (针幅25.4mm以内用)	SCREW (NEEDLE WIDTH 25.4mm)	4
11	20000689	左推板组件	SLIDE APLTE ASSY (L)	1
11-1	10013558	左推板	SLIDE APLTE (L)	1
11-2	10013560	透视窗	BOBBIN WINDOW	1
12	20000653	右推板组件	SLIDE PLATE ASSY (R)	1
12-1	10013605	右推板	SLIDE PLATE (R)	1
12-2	10013560	透视窗	BOBBIN WINDOW	1
13	10006594	横推板组件	SLIDE PLATE ASSY (F)	1
13-1	10013563	横推板	SCREW, FLAT	4
14	10013637	横推板紧固螺钉 (备选零件)	SET SCREW "OPTION PARTS"	1
8	10036289	机针 DP×5(21#)	NEEDLE DP×5(21#)	2
15	10038057	电线压板	CORD HOLDER (L)	4
16	10068864	绕线器小组件	WINDER CLAMP	1
17	10013363	绕线夹线器	BOBBIN WINDER	1
18	10071001	面板装饰牌	REFLECTOC PLATE	1

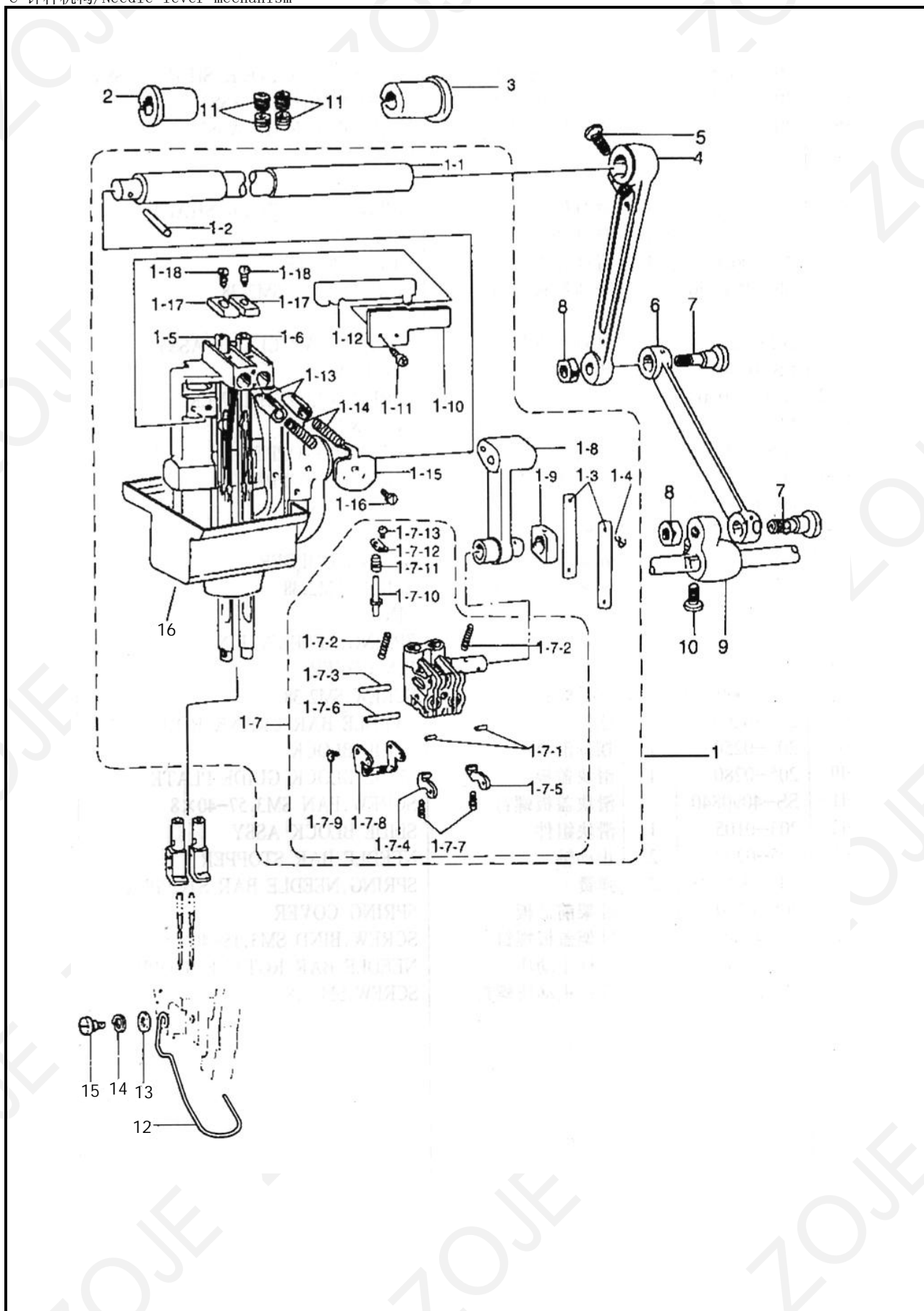
B 上轴机构/Upper shaft mechanism



B 上轴机构/Upper shaft mechanism

序号 No.	件号 Pars No.	名称	Description	数量 Number
1	10025882	上轴前轴承 (6004NR)	FRONT BEARING OF UPPER SHAFT	1
2	10013598	挑线防护罩螺钉	SCREW, PAN	2
3	10013351	上轴中轴套	UPPER SHAFT BUSHING ASSY (M)	1
4	10013469	上轴中轴套紧定螺钉	SET SCREW, SOCKET (CP)	1
5	10013457	上轴	UPPER SHAFT	1
6	10013413	针杆曲柄	THREAD TAKE-UP CRANK	1
7	10013441	针杆曲柄定位螺钉	SCREW	1
8	10013438	针杆曲柄螺钉	SET SCREW	1
9	10074304	针杆曲柄销	NEEDLE BAR CRANK	1
10	10008097	油线 (L=52)	WICK (L=52)	1
11	10013443	针杆曲柄销定位螺钉	SET SCREW,	1
12	10013405	针杆曲柄销固定螺钉	SET SCREW,	1
13	20003620	挑线防护罩	THREAD TAKE-UP CRANK	1
14	10006334	上齿形带轮分组件	TIMING PULLEY(U) ASSY	1
14-1	10013466	上齿形带轮	TIMING PULLEY (U)	1
14-2	10006476	上齿形带轮挡圈	TIMING PULLEY RING	2
15	10013465	上齿形带轮固定螺钉	SET SCREW, SOCKET (CP)	1
16	10013467	上齿形带轮定位螺钉	SET SCREW, SOCKET (CN)	1
17	10026985	A同步齿形带	TIMING BELT	1
18	10025881	轴承 (6204NR)	BEARING, 6204NR	1
19	20003605	上轮	PULLEY, ST	1
20	10013470	上轮螺钉	SET SCREW, (CP)	2
21	10013433	挑线杆	THREAD TAKE-UP, S3 TR	1
22	10013406	挑线连杆铰链轴	THREAD TAKE-UP SHAFT	1
23	10013469	挑线连杆铰链轴螺钉	SET SCREW, SOCKET (CP)	2
24	10074304	挑线杆连接柱	THREAD TAKE-UP LEVER LINK POLE	1
25	10013412	轴承衬套	BEARING BUSH	1
26	10013465	固定螺钉 (备选零件)	POSITION SCREW "OPTION PARTS"	2
5	10069045	上轴(扁电机)	UPPER SHAFT	1
19	20029636	上轮(扁电机)	PULLEY, ST	1
20	10002436	上轮螺钉	SET SCREW, (CP)	2
21	10013497	挑线杆 (8420)	THREAD TAKE-UP, S3 TR	1
27	10058272	双针小型伺服电机	MOTOR	1
28	10023952	螺钉M5×45	SCREW, M5×45	4
29	10068515	8420双针扁电机电控	ELECTRONIC CONTROL	1
30	10009520	M5×25螺钉	SCREW, M5×25	4

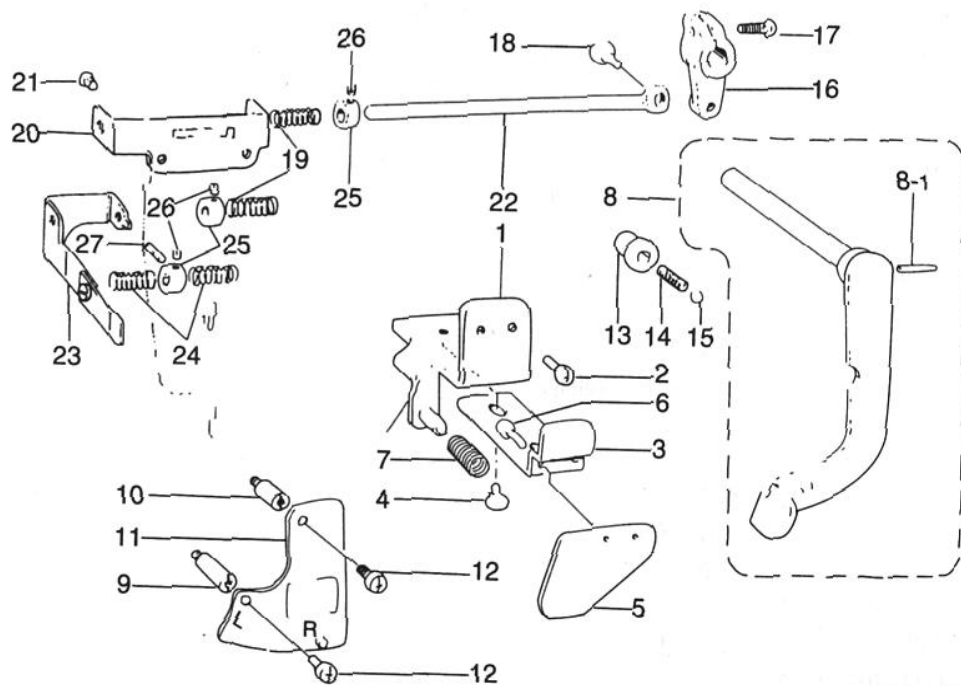
C 针杆机构/Needle lever mechanism



C 针杆机构/Needle lever mechanism

序号 No.	件号 Pars No.	名称	Description	数量 Number
1	10013374	针杆支架分组件	NEEDLE BAR ROCK SHAFT ASSY	1
1-1	10013607	摆针轴	NEEDLE BAR ROCK SHAFT	1
1-2	10002813	4×26销	PIN, TAPER4×26	1
1-3	10013400	导轨衬板	GUIDE PLATE	2
1-4	10006436	导轨衬板螺钉	SCREW, FLAT SM2.38	4
1-5	10006496	针杆组件(左)	NEEDLE BAR (L) ASSY	1
1-6	10006492	针杆组件(右)	NEEDLE BAR (R) ASSY	1
1-7	10013426	针杆小支架组件	NEEDLE BAR CLAMP ASSY	1
1-7-1	10013423	销	PIN, 1.5×5.8	1
1-7-2	10013429	弹簧	SPRING, CLRTCH LEVER	2
1-7-3	10013432	销	PIN, 2×15.8	1
1-7-4	10006460	止动块(左)	CLUTCH STOPPER (L)	1
1-7-5	10006459	止动块(右)	CLUTCH STOPPER (R)	1
1-7-6	10013423	销	PIN, 2×17.8	1
1-7-7	10013430	弹簧	SPRING	2
1-7-8	10013428	弹簧支架	SPRING HOLDER	1
1-7-9	10013425	弹簧支架螺钉	SCREW, SM2.38	2
1-7-10	10006461	栓	PIN	1
1-7-11	10006458	弹簧	SPRING, RELEASE PIN	1
1-7-12	10006464	栓盖	PIN COVER	1
1-7-13	10006466	栓盖螺钉	SCREW, SM2.38	1
1-8	10006443	三眼连杆	THREE-EYE CONNECTING ROD	1
1-9	10013386	摆杆滑块	SLIDE BLOCK	1
1-10	10013343	滑块盖板	SLIDE BLOCK GUIDE PLATE	1
1-11	10013643	滑块盖板螺钉	SCREW, PAN SM3.57-40X8	2
1-12	10006463	滑块组件	SLIDE BLOCK ASSY	1
1-13	10013383	止动轴	NEEDLE BAR STOPPER	2
1-14	10013389	弹簧	SPRING, NEEDLE BAR STORRER	2
1-15	10013377	针架前盖板	SPRING COVER	1
1-16	10013382	针架盖板螺钉	SCREW, BIND SM3.18-40X5	2
1-17	10006444	针杆止动块	NEEDLE BAR ROTATE STOPPER	2
1-18	10013376	针杆止动块螺钉	SCREW, SM3.18	2
2	10013471	摆轴前轴套	NEEDLE BAR ROCK SHAFT BUSH (L)	1
3	10013468	摆轴后轴套	NEEDLE BAR ROCK SHAFT BUSH (R)	1
4	10013641	摆轴大连杆	NEEDLE BAR ROCK CONNECTING ROD	1
5	10013348	摆轴大连杆螺钉	SCREW, SM6.35	1
6	10013395	摆轴小连杆	NEEDLE BAR ROCK LINK	1
7	10013393	摆轴连杆螺钉	NEEDLE BAR ROCK LINK SHAFT	2
8	10013398	摆轴连杆螺母	NUT, SM7.94	2
9	10013401	摆针轴后曲柄	NEEDLE BAR CONNECTING CRANK	1
10	10013403	摆轴曲柄螺钉	SCREW, SM6.35X18	1
11	10013385	螺钉	SET SRCEW, SOCKET (CP) SM7.94	4
12	10013646	护指架	FINGER GUARD	1
13	10013639	护指架垫圈	WASHER, PLAIN5	1
14	10005537	护指架弹簧垫圈	WASHER, SPRING 2-4.37	1
15	10013648	护指架螺钉	SHOULDER SCREW, SM3.57	1
16	10013409	面部防油罩	OIL SEAL COVER	1

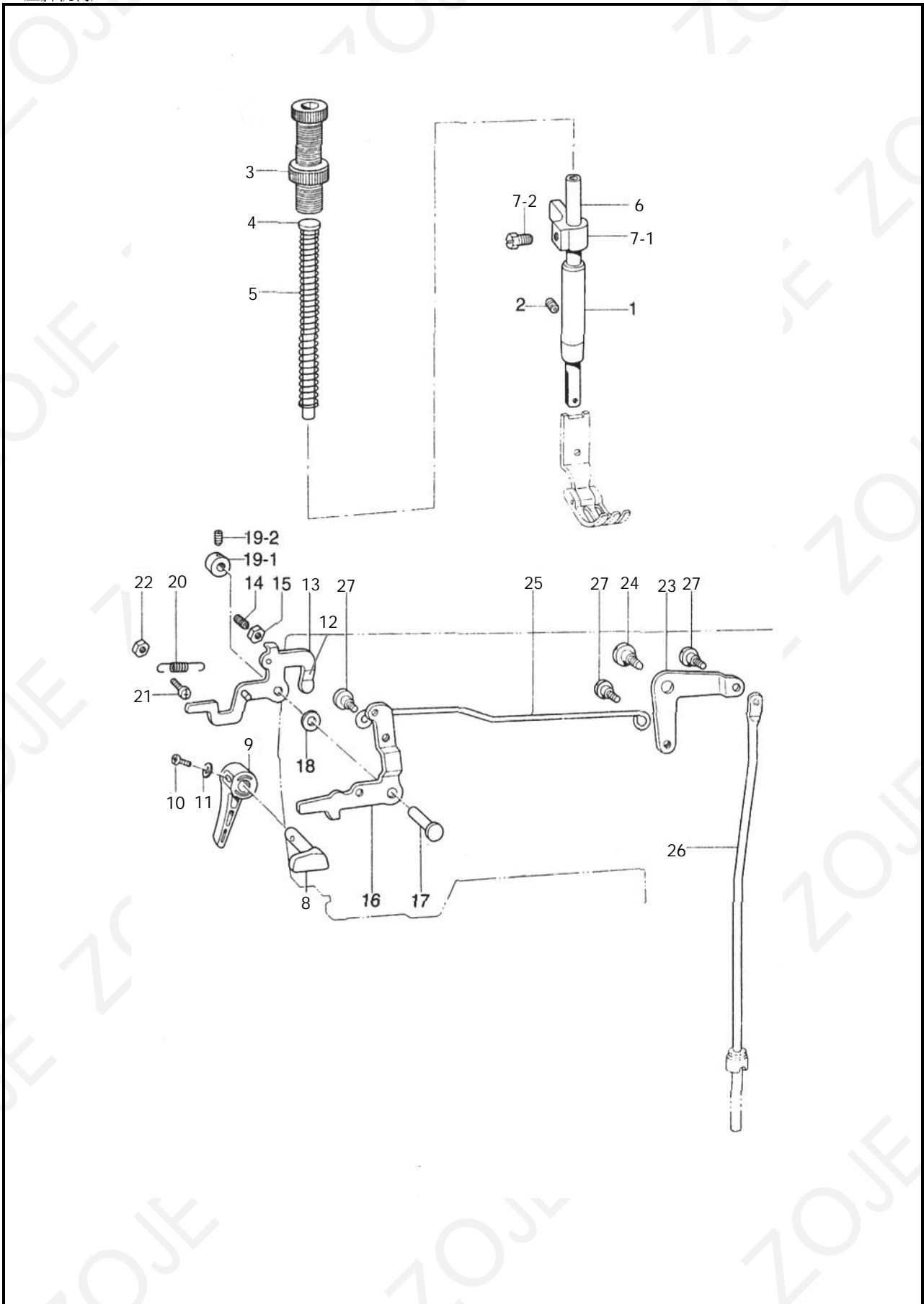
D 针杆切换操作部件/Needle lever switching operating unit



D 针杆切换操作部件/Needle lever switching operating unit

序号 No.	件号 Pars No.	名称	Description	数量 Number
1	10013411	压板组件	INDICATION PLATE ASSY	1
2	10013655	螺钉	SCREW, PAN SM4. 76-32×10	2
3	10013338	推板	PUSH LEVER	1
4	10013410	螺钉	SCREW	2
5	10013334	推板支承板	PUSH LEVER PLATE	1
6	10013598	螺钉	SCREW, PAN SM3. 57-40×5	2
7	10013335	弹簧	SPRING	1
8	10013337	针杆控制操作器	STOP LEVER SHAFT ASSY	1
8-1	10006428	销	PIN, SPRING 3×18	1
9	10013314	螺栓 (大)	STUD (L)	1
10	10013309	螺栓 (小)	STUD (S)	1
11	10013331	分离固定板组件	FLIP-UP HOLDER PLATE ASSY	1
12	10013655	螺钉	SCREW, PAN SM4. 36-32×10	2
13	10013312	弹簧套	BALL GUDE BUSH	1
14	10013319	弹簧	SPRING	1
15	10013306	钢珠	BEARING BALL 1/4	1
16	10013332	针杆控制轴曲柄	LEVER SHAFT ARM	1
17	10013333	螺钉	SCREW PAN SM4. 76-32×14	1
18	10013340	螺钉	SHOULDER SCREW, SM4. 37	1
19	10013387	弹簧	SPRING	2
20	10013342	拉杆托架	SLIDE SHAFT BRACKET	1
21	10013603	分离连接组件紧固螺钉	SCREW, PAN SM4. 37-40×8	2
22	10013339	拉杆	SLIDE SHAFT	1
23	10013378	滑动杆	SLIDE SHAFT SOUTPORT PLATE	1
24	10013388	弹簧	PLATE SPRING	2
25	10013375	挡圈	SET SCREW COLLAR	3
26	10013379	螺钉	SET SCREW, (FT) SM3. 57	2
27	10013381	螺钉	GUIDE SCREW	1

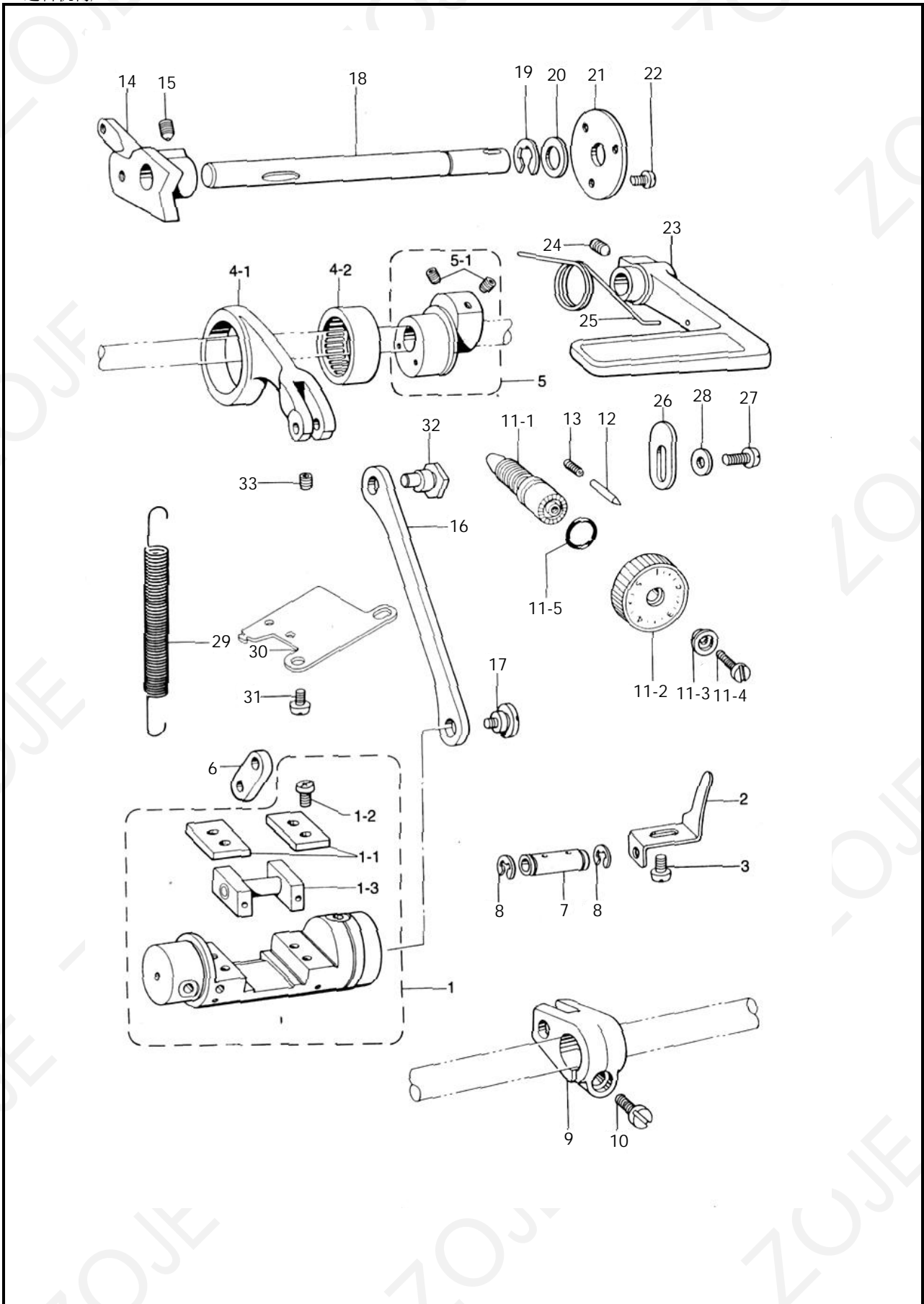
E 压脚机构/Presser foot mechanism



E 压脚机构/Presser foot mechanism

序号 No.	件号 Pars No.	名称	Description	数量 Number
1	10010841	压杆轴套	PRESSER BAR BUSH	1
2	10013469	压杆轴套螺钉	SET SCREW, SOCKET (CP)	1
3	10085082	调节螺钉组件	PRESSER ADJUST SCREW ASSY	1
4	10012155	压杆弹簧导柱	SPRING GUIDE	1
5	10013251	压杆弹簧	PRESSER SPRING	1
6	10013247	压杆	PRESSER BAR	1
7	20001253	压杆导架组件	PRES. BAR GUIDE BRACKET W/SCR	1
7-1	10013584	压杆导架	PRESSER BAR GUIDE BRACKET	1
7-2	10013591	压杆导架螺钉	BOLT	1
8	10013284	压杆提升凸轮	PRESSER BAR LIFTER STUD	1
9	10013229	压脚扳手	PRESSER BAR LIFTER	1
10	10012154	压脚扳手螺钉	SCREW, PAN	1
11	10012156	压脚扳手螺钉垫圈	WASHER	1
12	10013589	膝控前内板组件	TENSION RELEASE PLATE ASSY	1
13	10006589	膝控前内板	TENSION RELEASE PLATE TR	1
14	10013223	膝控前内板调节螺钉	SET SCREW	1
15	10013246	膝控前内板调节螺母	NUT	1
16	10013587	膝控前外板	PRESSER BAR LIEER LEVER	1
17	10013219	膝控前拔销	PRESSER BAR LIFTER LEVER SHAFT	1
18	10013220	膝控内外板垫	WASHER	1
19-1	10013594	膝提前拔销紧圈	SETSCREW COLLAT	1
19-2	10013590	膝提前拔销紧固螺钉	SET SCREW, SOCKET, SOCKET	2
20	10013224	膝提前板拉簧	SPRING	1
21	10013223	膝控前板螺钉	SCREW, PAN	1
22	10013246	膝控前板螺母	NUT	1
23	10013270	膝控提升后杠杆	KNEE LIFTER LEVER	1
24	10013250	膝控提升后拉杆螺钉	SHOULDER SCREW	1
25	10013280	膝控提升拉杆	KNEE LIFTER CONNECTING ROD	1
26	10013593	膝控提升连杆	KNEE LIFTRE BAR	1
27	10013217	膝控提升杆螺钉	SHOULDER	3

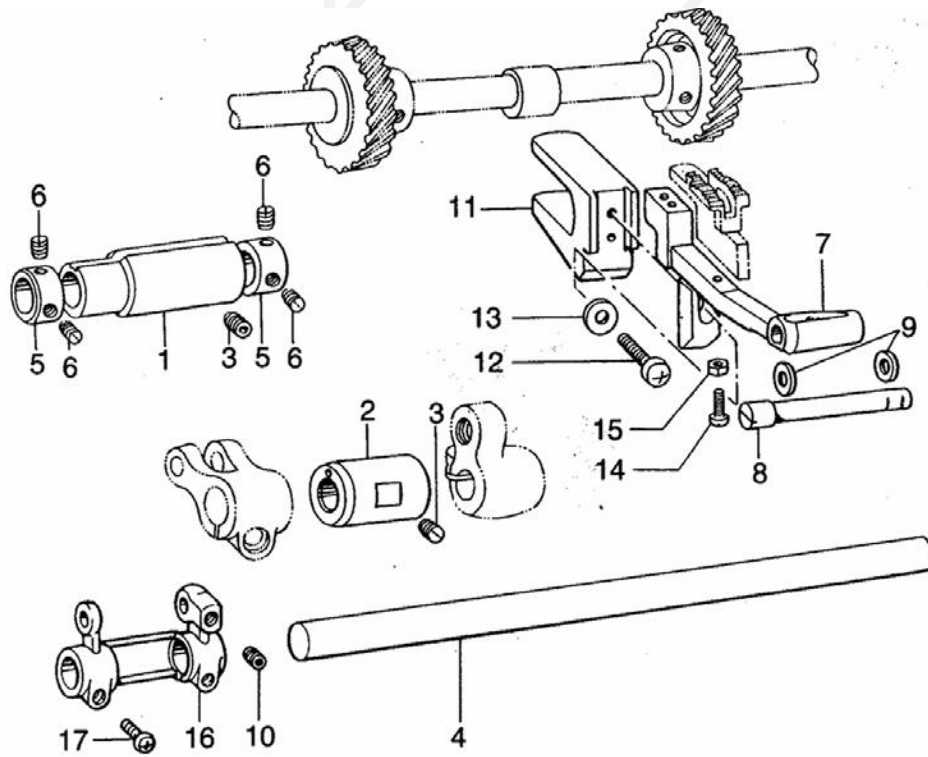
F 送料机构/Feed mechanism



F 送料机构/Feed mechanism

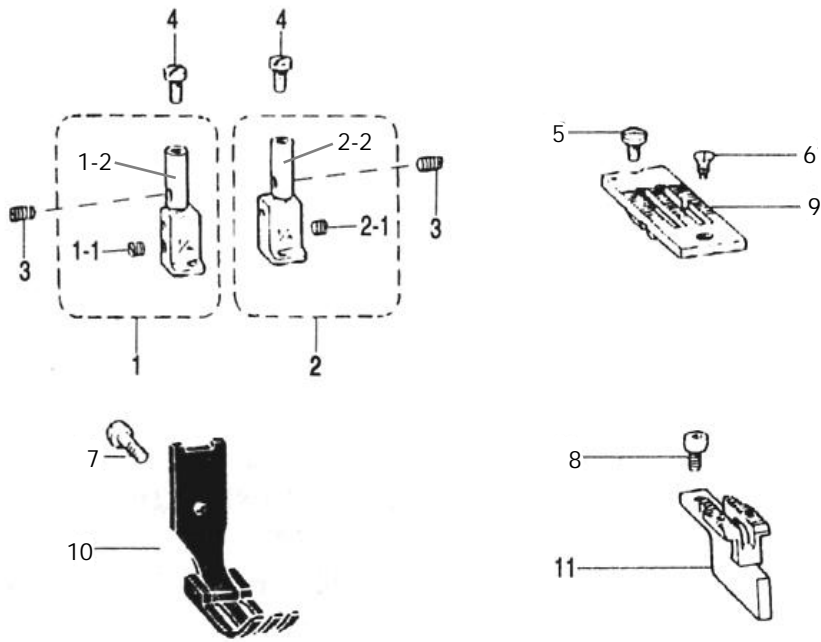
序号 No.	件号 Pars No.	名称	Description	数量 Number
1	10013435	送布调整轴分组件	FEED REGULATOR ASSY	1
1-1	10006583	滑块导板	SLIDE BLOCK GUIDE PLATE	2
1-2	10013647	滑块导板螺钉	SCREW, PAN	4
1-3	10006500	倒缝滑块	FEED REGULATOR SLIDE BLOCK A. ASSY	2
2	10013476	送布调整轴挡片	FEED REGULATOR STOPPER	1
3	10013499	送布调整轴挡片螺钉	SCREW, PAN	1
4	20001071	送布摇动连杆组件	FEED ROCK CONNECTING ROD ASSY	1
4-1	10013507	送布摇动连杆	FEED ROCK CONNECTING ROD	1
4-2	10013554	滚针轴承	NEEDLE BEARING	1
5	10013551	送布偏心轮	LEVEL ECCENTRIC WHEEL WITH SCR	1
5-1	10013465	送布偏心轮螺钉	SET SCREW, SOCKET	2
6	10013552	送布摇动臂连板	FEED ROCK ARM LINK	1
7	10013581	送布曲柄销	FEED ROCK RING, SHAFT	1
8	10013582	卡簧	RETAINING RING, E6	2
9	10013579	送布曲柄	FEED ROCK ARM	1
10	10013403	送布曲柄螺钉	SCREW	1
11	20001299	针距标盘组件	STITCH CONTROL DIAL ASSY	1
11-1	10013233	针距调节螺杆	STITCH CONTROL SCREW	1
11-2	10013367	针距标盘	STITCH CONTROL DIAL	1
11-3	10012150	针距标盘套	LENGTH CONTROL PLATE SUPPORT	1
11-4	10014409	针距标盘螺钉	SCREW	1
11-5	10012151	针距调节螺杆O型圈	O RING	1
12	10012153	止动销	POSITIONING PIN	1
13	10012152	止动销弹簧	SPRING	1
14	10013546	针距座	FEED REGULATOR	1
15	10013544	针距座定位螺钉	SET SCREW. SOCKET	1
16	10013547	针距连杆	FEED REGULATOR CONNECTING ROD	1
17	10013503	针距连杆螺钉	SHOULDER SCREW	1
18	10013230	倒缝扳手轴	REVERSE STITCH LEVER SHAFT, ST	1
19	10013248	倒缝扳手轴卡簧	RETAINING RING	1
20	10013508	倒缝扳手挡板垫圈	WASHER, PLAIN S 10	1
21	10013512	倒缝扳手轴挡板	WASHER	1
22	10013518	倒缝扳手轴挡板螺钉	SCREW PAN	3
23	10010236	倒缝扳手	REVERSE LEVER ST.	1
24	10010678	倒缝扳手螺钉	SET SCREW, SOCKET	1
25	10013501	倒缝扳手复位簧	SPRING	1
26	10013475	限位板	REVERSE LEVER STOPPER	1
27	10013655	限位板螺钉	SCREW PAN	1
28	10013691	限位螺钉垫圈	SCREW PLAIN	1
29	10013500	针距座弹簧	SPRING, FEED REGULATOR	1
30	10013234	弹簧吊钩	SPRING HOOK	1
31	10013499	弹簧吊钩螺钉	SCREW, PAN	2
32	10013553	送布调整偏心轴	FEED REGULATOR ECCENTRIC WHEEL SHAFT	1
33	10013538	送布调整偏心轴螺钉	SET SCREW, SOCKET	3

G 送料轴机构/Feed shaft mechanism



G 送料轴机构/Feed shaft mechanism

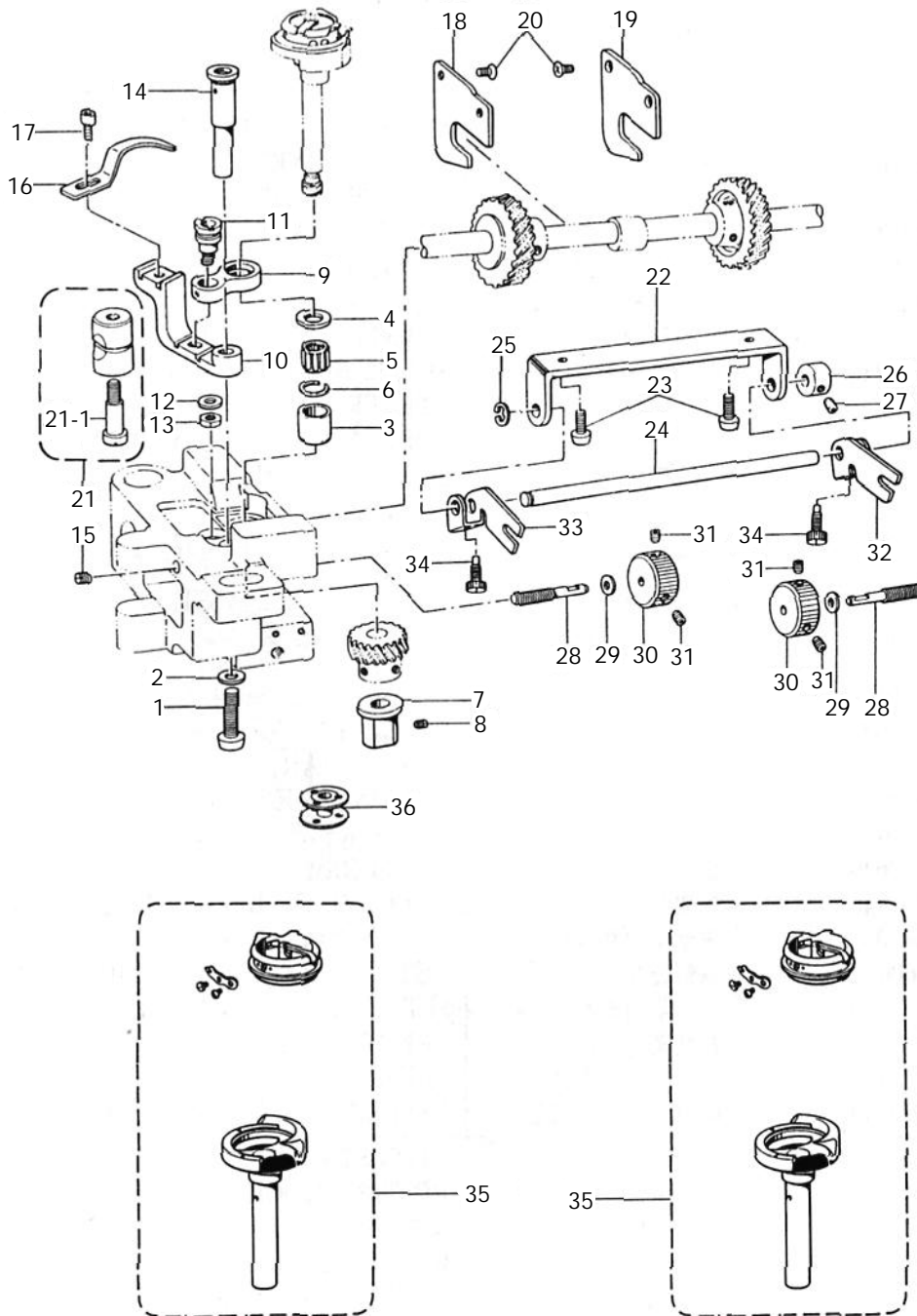
序号 No.	件号 Pars No.	名称	Description	数量 Number
1	10013471	送料轴前轴套	FEED SHAFT BUSH (L)	1
2	10022292	送料轴后轴套	FEED SHAFT BUSH (R)	1
3	10013469	送料轴轴套紧固螺钉	SET SCREW , SOCKET (CP) SM6.35	2
4	10013498	送料轴	FEED ROCK SHAFT	1
5	10013517	止推环	SET SCREW COLLAR	2
6	10013441	止推环螺钉	SET SCREW, SM6.35	4
7	10013505	牙架	FEED BAR, ST	1
8	10013510	牙架销	FEED BAR SHAFT	1
9	10013514	牙架销垫圈	THRUST RING	2
10	10011314	牙架销螺钉	SET SCREW, SOCKET SM5.95	1
11	10013481	拾牙叉	FEED BAR FORK	1
12	10013513	拾牙叉固定螺钉	SCREW, PAN SM5.95-28×14	1
13	10013509	拾牙叉固定螺钉垫圈	WASHING, PLAIN S6	1
14	10013519	送料牙调整螺钉	SCREW, PAN SM3.18-40×12	1
15	10013516	送料牙调整螺母	NUT, 1 SM3.18	1
16	10013515	牙架曲柄	FEED ROCK BASE ARM	1
17	10013541	牙架曲柄螺钉 <备选零件>	SCREW, PAN SM4.37-40×12 "OPTION PARTS"	2
7	10013571	牙架	FEED BAD, TR	1



H 针组零件/Guage parts

序号 No.	件号 Pars No.	名称	Description	数量 Number
1		针杆接头组件 (左)	NEEDLE CLAMP (L) ASSY	1
1-1	10013427	机针紧定螺钉	SET SCREW, (CP) SM3.18X4	1
1-2	10013424	针杆接头 (左)	NEEDLE CLAMP (L)	1
2		针杆接头组件 (右)	NEEDLE CLAMP (R) ASSY	1
2-1	10013427	机针紧定螺钉	SET SCREW, (CP) SM3.18X4	1
2-2	10013392	针杆接头 (右)	NEEDLE CLAMP (R)	1
3	10013391	针杆接头固定螺钉	SET SCREW, SM3.18	2
4	10013431	针杆接头调节螺钉	SET SCREW, SM3.18	2
5	10013608	针板螺钉	SCREW, SM3.18	1
6	10013611	针板螺钉	SCREW, FLAT SM4.37	1
7	10013221	压脚螺钉	SCREW, SM3.57	1
8	10013542	送料牙固定螺钉 <标准件>	SCREW, SM3.18 <FOR THREAD>	2
9	10013308	针板	NEEDLE PLATE	1
10	10006609	压脚组件	PRESSER FOOT ASSY	1
11	10013540	送料牙 <备选零件>	FEED DOG "OPTION PARTS"	1
9	10013487	针板<大旋梭>	NEEDLE PLATE	1
10	10013492	压脚组件<大旋梭>	PRESSER FOOT ASSY	1
11	10013226	送料牙(厚料)	FEED DOG	1

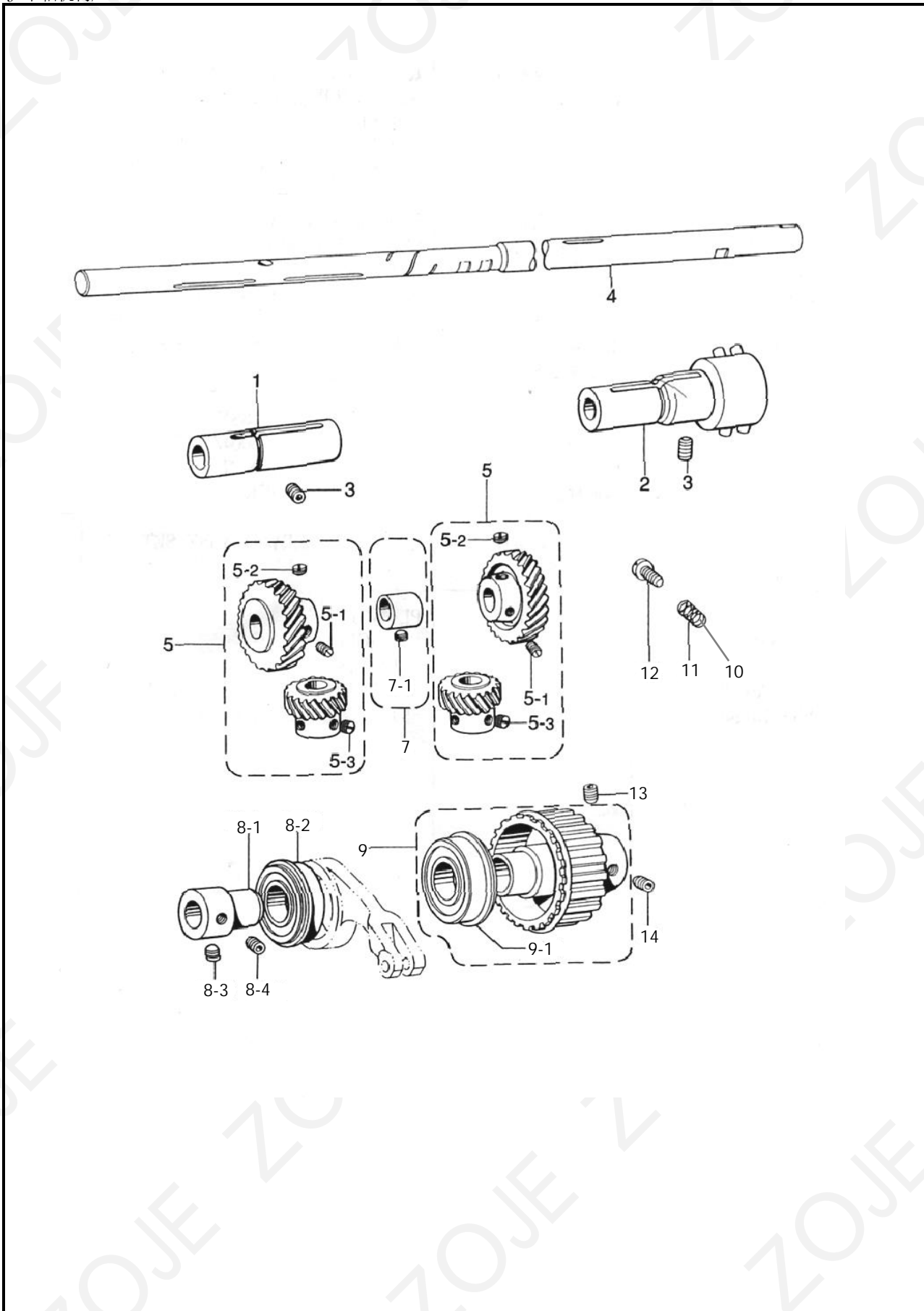
I 旋梭机构/Rotary mechanism



I 旋梭机构/Rotary mechanism

序号 No.	件号 Pars No.	名称	Description	数量 Number
1	10013676	梭架固定螺钉	SCREW, PAN	2
2	10013678	梭架固定螺钉垫圈	WASHER	2
3	10013708	梭轴上轴套	ROTARY HOOK SHAFT BUSH(U)	2
4	10074444	轴承端盖	THRUST RING	2
5	10013711	滚针轴承	NEEDLE BEARING	2
6	10013713	梭轴上轴套挡圈	STOP RING	2
7	10013688	梭轴下轴套	ROTARY HOOK SHAFT BUSH(D)	2
8	10013652	梭轴下轴套螺钉	SET SCREW, (CP)	2
9	10013654	分线连杆	OPENER LINK	2
10	10013684	分线摆动连杆	OPENER LEVER	2
11	10013712	分线连杆连接轴	OPENER LINK SHAFT	2
12	10013691	分线连杆连接轴垫圈	WASHER, PLAIN	2
13	10013710	分线连杆连接轴螺母	NUT	2
14	10013686	摆动杆轴	OPENER LEVER SHAFT	2
15	10013649	摆动杆轴固定螺钉	SET SCREW, (CP)	2
16	10075153	分线钩	OPENER	2
17	10006624	分线钩固定螺钉	BOLT, SOCKER	2
18	10013650	齿轮挡片(左)	GEAR GUIDE(L)	1
19	10013717	齿轮挡片(右)	GEAR GUIDE(R)	1
20	10013601	齿轮挡片螺钉	SCREW, FLAT SM3. 57	4
21	10013720	锁紧套管组件	PINCH SLEEVE ASSY	2
21-1	10006684	锁紧套管螺钉	SCREW, SM5. 95	2
22	10013677	调整杆支架	ADJUST BAR SUPPORT	1
23	10013655	调整杆支架螺钉	SCREW, PAN SM4. 76-32X10	1
24	10013722	调整杆	ADJUST BAR	1
25	10009669	调整杆卡圈	RETAINING RING, E4	1
26	10013517	止推环	SET SCREW COLLAR	2
27	10013441	止推环螺钉	SET SCREW, SOCKET (CP) SM4. 37	2
28	10013474	梭架调整螺钉	ROTRY HOOK BASS ADJUST SCREW	2
29	10013477	梭架调整垫片	WASHER, PLAIN S 4. 37	2
30	10013473	调整旋钮	ROTARY HOOK BASE ADJUST DIAL	2
31	10013721	旋钮紧固螺钉	SET SCREW, SOCKET (CP) SM4. 37	4
32	10013496	调整叉杆(右)	PRESET LEVER (R)	1
33	10013472	调整叉杆(左)	PRESET LEVER (L)	1
34	10013502	调整叉杆固定螺钉 <标准件>	NEEDLE SET SCREW, SM3. 57 “STANDARD PARTS”	2
35	10013749	旋梭组件	ROTARY HOOK ASSEMBLY	2
36	10013653	梭芯 <备选零件>	BOBBIN, ST “OPTION PARTS”	2
35	10007171	旋梭组件	ROTARY HOOK ASSEMBLY	2
35	10024000	旋梭组件	ROTARY HOOK ASSEMBLY	2
36	10013483	梭芯	BOBBIN, ST	2

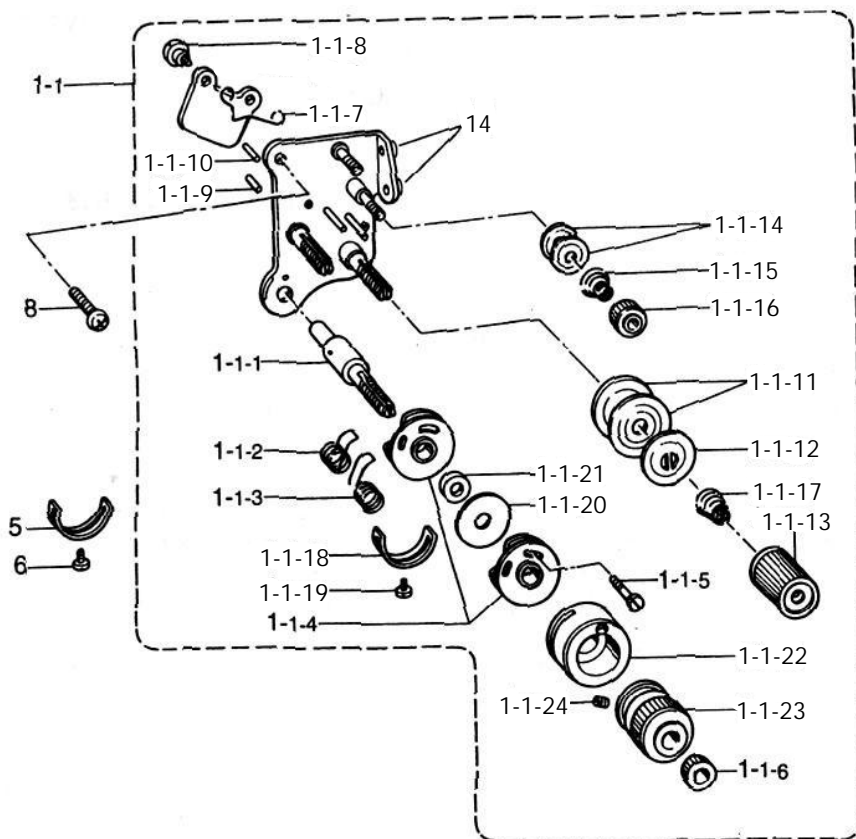
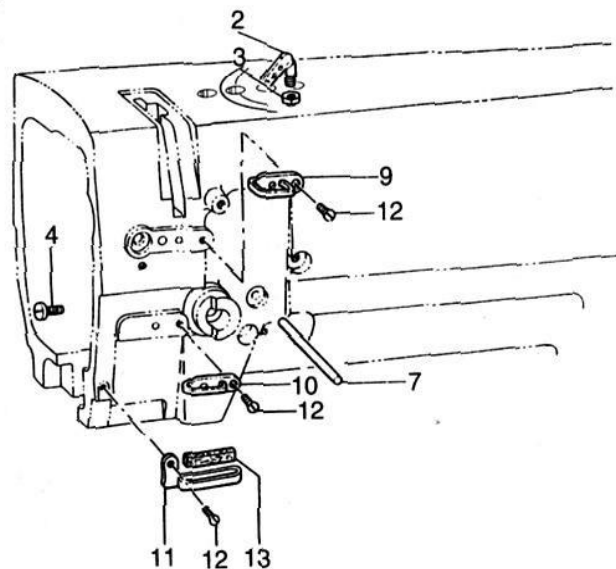
J 下轴机构/Lower shaft mechanism



J 下轴机构/Lower shaft mechanism

序号 No.	件号 Pars No.	名称	Description	数量 Number
1	10013682	下轴前轴套	ROTARY HOOK BASE BUSH L	1
2	20001236	下轴中轴套组件	ROTARY HOOK BASE BUSH ASSY (R)	1
3	10013469	轴套螺钉	SET SCREW, SOCKET (CP) SM6. 35	2
4	10013231	下轴	LOWER SHAFT, ST	1
5	10031560	梭架齿轮组件	SPIRAL GEAR ASSY (A)	2
5-1	10013685	固定螺钉	SET SCREW, SM6. 35	4
5-2	10006660	齿轮定位螺钉	SET SCREW, SM6. 35	2
5-3	10006338	齿轮螺钉	SET SCREW, (CP) SM6. 35	6
6	10006679	下轴齿轮组件	SPIRAL GEAR ASSY (A)	2
7	10013212	拾牙偏心轮	VERTICAL FEED ECCENTRIC WHEEL ASSY	1
7-1	10013685	拾牙偏心轮螺钉	SET SCREW, SM6. 35	1
8-1	10013715	轴承衬套	BALL BEARING	1
8-2	10025882	滚珠轴承 (6004NR)	BALL BEARING, 6004NR	1
8-3	10013467	轴承衬套定位螺钉	SET SCREW, SOCKET (CN) SM6. 35	1
8-4	10013465	轴承衬套螺钉	SET SCREW, SOCKET (CP) SM6. 35	1
9	10006332	下齿形带轮分组件	TIMING PULLEY D ASSY SET	1
9-1	10025881	轴承 (6204NR)	BEARING, 6204NR	1
10	10012609	下轴中轴套柱塞	PLUNGER	2
11	10013238	活塞弹簧	PLUNGER SPRING	2
12	10013232	活塞螺钉	SCREW, SM6. 35×5	2
13	10013465	下齿形带轮螺钉	SET SCREW, SOCKET (CP) SM6. 35	1
14	10013467	下齿形带轮定位螺钉	SET SCREW, SOCKET (CN) SM6. 35	1

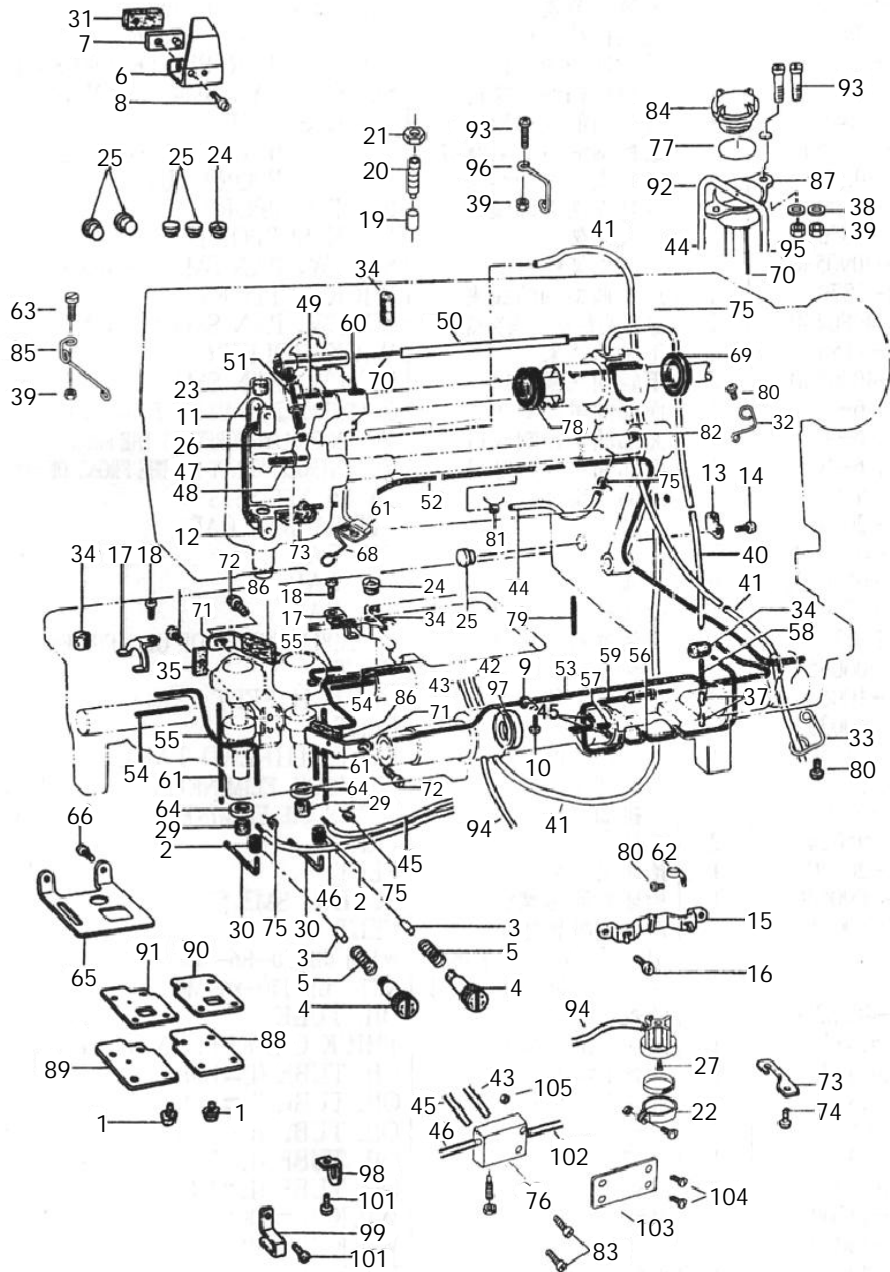
K 过线压线机构/Over line press mechanism



K 过线压线机构/Over line press mechanism

序号 No.	件号 Pars No.	名称	Description	数量 Number
1-1	10013364	夹线器分组件	UPPER THREAD TENSION ASSY, D-F	1
1-1-1	10006440	挑线簧螺栓	TENSION STUD	1
1-1-2	10006544	挑线簧(左)	THREAD TAKE-UP SPRING L	1
1-1-3	10006539	挑线簧(右)	THREAD TAKE-UP SPRING R	1
1-1-4	10006535	上挑线导线器组件	TENSION SPRING GUIDE ASSY	2
1-1-5	10006532	导线器螺钉	SCREW, SM2.38	1
1-1-6	10006566	夹线螺母	TENSION NUT	1
1-1-7	10006540	松线板簧	SPRING, TENSION RELEASE	1
1-1-8	10006557	松线板螺钉	SHOULDER SCREW, SM3.57	2
1-1-9	10006560	长松线针(L)	PIN, TENSION RELEASE(L)	1
1-1-10	10006569	短松线针(R)	PIN, TENSION RELEASE(R)	1
1-1-11	10006541	夹线板	TENSION DISC	4
1-1-12	10006543	夹线板座	TENSION DISC PRESSER	2
1-1-13	10006561	夹线螺母	TENSION NUT	2
1-1-14	10006571	过线夹板	THREAD GUIDE DISC	4
1-1-15	10006563	过线簧	SPRING, PRE-TENSION (A)	2
1-1-16	10006561	夹线螺母	TENSION NUT	2
1-1-17	10006542	夹线簧	THREAD TENSION ADJUST SPRING	2
1-1-18	10013561	挑线簧调整板	TENSION SPRING STOPPER	1
1-1-19	10013598	螺钉	SCREW, PAN SM3.57-40X5	1
1-1-20	10006559	挑线簧导向板	SPACER	1
1-1-21	10006570	套环	COLLAR	1
1-1-22	10006564	夹线座	STOPPER SUPPORT	1
1-1-23	10006558	夹线套盖	ADJUST THUMB	1
1-1-24	10006532	螺钉	SET SCREW, (CP) SM3.18	1
2	10013353	四眼线勾	THREAD RETAINER	1
3	10013606	四眼线勾螺母	NUT, SM5.95	1
4	10013603	挑线簧螺栓紧固螺钉	SCREW, SM3.57	1
5	10013561	挑线簧调整板	TENSION SPRING STOPPER	2
6	10013601	挑线簧调整板螺钉	SCREW, PAN SM3.57-40X5	2
7	10013562	松线顶杆	TENSION RELEASE BAR	1
8	10013565	夹线器紧定螺钉	SCREW, PAN SM4.37-40X8	1
9	10013599	上过线勾	ARM THREAD GUIDE (U)	1
10	10013600	大过线勾	ARM THREAD GUIDE (M)	1
11	10013557	导线架	ARM THREAD GUIDE (D)	1
12	10013598	线勾螺钉	SCREW, FLAT SM3.57	3
13	10013521	导线架毛毡	FELT	1
14	10006565	过线套	THREAD GUIDE BUSH	2
		<备用零件>	"OPTION PARTS"	
1-1	10013414	夹线器分组件	UPPER THREAD TENSION ASSY, D-F	1

L 润滑机构/Lubricating mechanism

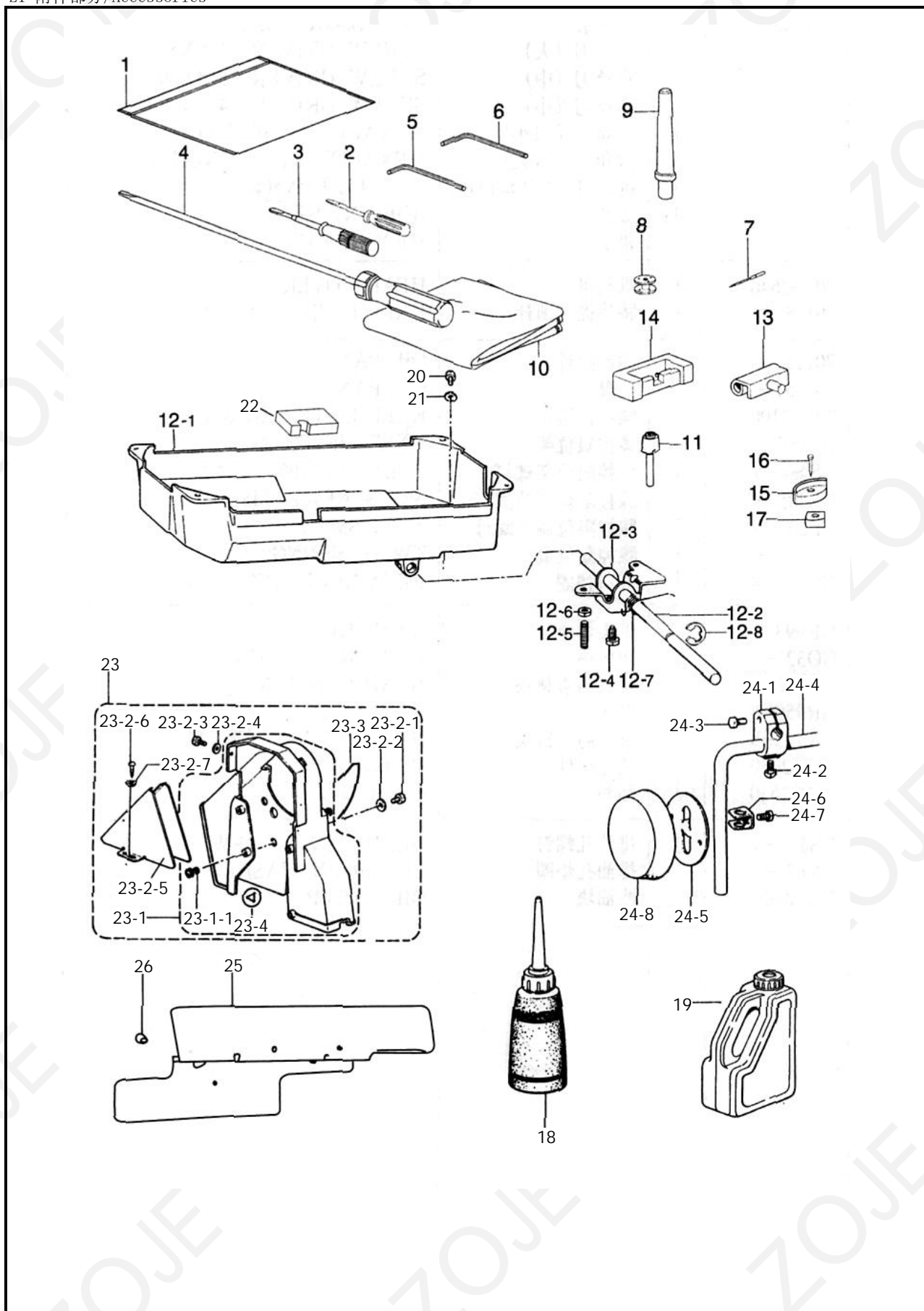


L 润滑机构/Lubricating mechanism

序号 No.	件号 Pars No.	名称	Description	数量 Number
1	10013258	回油盒螺钉	SCREW, PAN SM3. 57-40×8	8
2	10013266	油量调节套	RUBBER RING	2
3	10013261	油量调节塞	RUBBER ORESSER	2
4	10013290	油量调节螺钉	OIL ADJUST SCREW	2
5	10013252	油量调节簧	OIL ADJUST SPRING	2
6	10013489	毛毡支架	FELT SUPPORT	1
7	10013256	挑线杆挡油压板	OIL STOPPER PLATE PRESSER	1
8	10013655	挑线杆挡油板螺钉	SCREW, PAN SM4. 76-32×12	1
9	10013497	送料轴油线支架	WICK SUPPORT	1
10	10013598	送料轴油线支架螺钉	SCREW, BIND SM3. 57-40×5	1
11	10013402	针杆支架上油线夹	FELT SUPPORT (U)	1
12	10013346	针杆支架下油线夹	FELT SUPPORT (D)	1
13	10013345	油线支架	WICK SUPPORT	1
14	10013598	油线支架螺钉	SCREW, PAN SM3. 57-40×5	1
15	10013580	送布调整轴油线支架	WICK SUPPORT	1
16	10013504	送布调整轴油线支架螺钉	SCREW, PAN SM3. 18-40×4	2
17	10013680	下轴油线架	WICK HOLDER	2
18	10013598	下轴油线架螺钉	SCREW, PAN SM3. 57-40×5	2
19	10013244	面部油量控制垫块	OIL CONTROLLING WSSHER AT THE FRONT OF MACHINE	1
20	10013273	面部油量控制螺钉	OIL CONTROLLING SCREW AT THE FRONT OF MACHINE	1
21	10013282	面部油量控制螺母	OIL CONTROLLING NUT AT THE FRONT OF MACHINE	1
22	20001065	滤油器组件	OIL EIL TER SETS	1
23		毛毡	FELT	1
24	10013583	橡胶塞	RUBBER PLUG	1
25	10013586	橡胶塞	RUBBER PLUG	5
26		挑线杆塞	OIL CAP	1
27	10009101	滤油器安装螺钉	ASSEMBLY SCREW OF OIL FILTER	1
28		毛毡	FELT	2
29	10013253	梭头下毛毡	CLUTCH FELT	2
30	10008091	油线	OIL LINE	2
31	10013668	挑线杆挡油毛毡	FELT, THREAD TAKE-UP	1
32	10013272	中轴套排油架	UPPER OIL ELIMINETING TUBE STAND	2
33	10013276	下排油管架	LOWER OIL ELIMINETING TUBE STAND	1
34	10013254	毛毡	FELT	3
35	10013539	抬牙叉油毡	FELT	1
36	10013543	抬牙叉油毡螺钉	SCREW, SM3. 57	1
37	10013550	送布调整轴孔油毡	FELT	4
38		平垫片 GB170-86-φ4	WASH GB170-86-φ4	2
39		螺母 GB6170-86-M4	NUT GB6170-86-M4	2
40	10007800	油管	OIL TUBE	1
41	10007800	回油管 (L=750)	OIL TUBE (L=750)	1
42	10007800	油管 (L=150)	OIL TUBE (L=150)	1
43	10007800	油管 (L=150)	OIL TUBE (L=150)	1
44	10007800	油管 (L=130)	OIL TUBE (L=130)	1
45	10007800	油管 (L=200)	OIL TUBE (L=200)	1
46	10007800	油管 (L=230)	OIL TUBE (L=230)	1
47	10008091	油线 (L=200)	WICK (L=200)	1
48	10008091	油线 (L=30)	WICK (L=30)	1
49	10008091	油线 (L=18)	WICK (L=18)	1
50	10008091	油管 (L=230)	OIL TUBE (L=230)	1
51	10008091	油线 (L=40)	WICK (L=40)	1
52	10008091	油线 (L=440)	WICK (L=440)	1
53	10008091	油线 (L=350)	WICK (L=350)	1

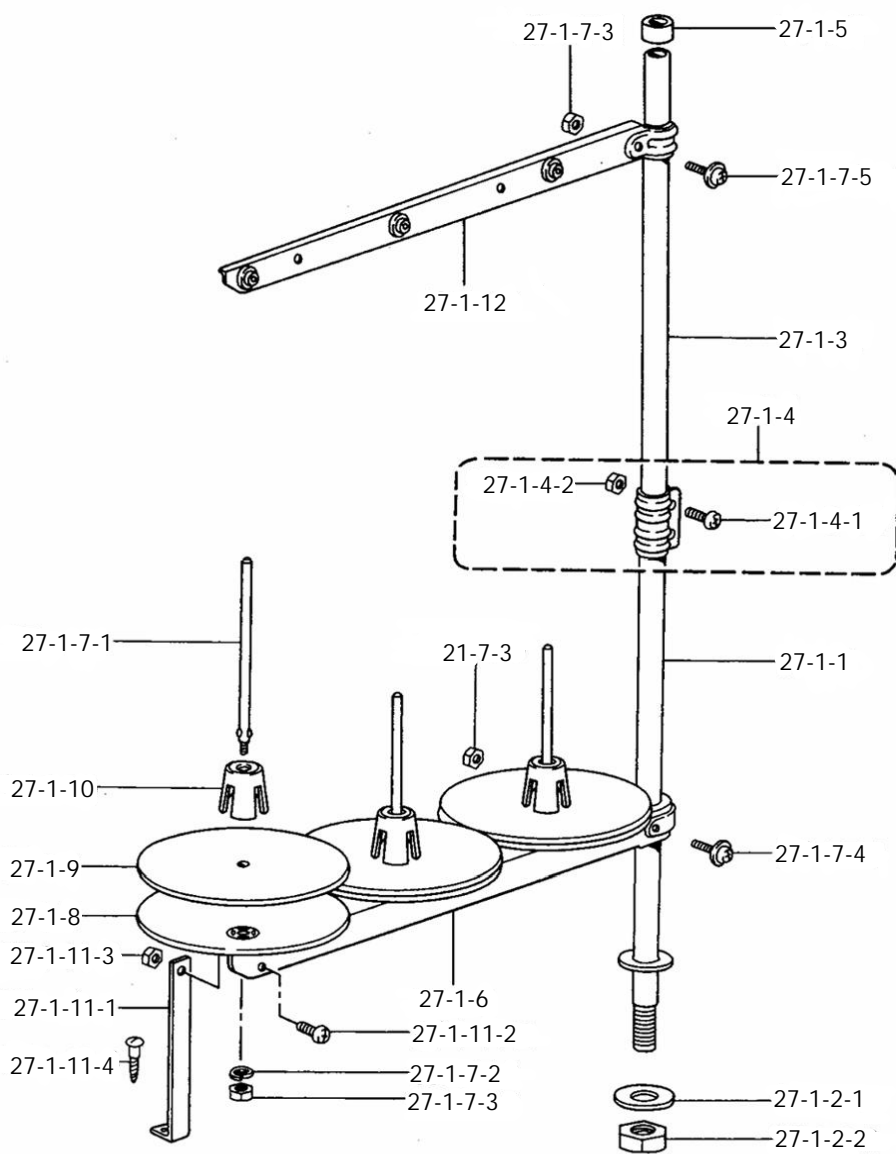
L 润滑机构/Lubricating mechanism

序号 No.	件号 Pars No.	名称	Description	数量 Number
54	10008091	油线	WICK	2
55	10008091	油线4×4 (L=250)	WICK 4×4 (L=250)	2
56	10008091	油线4×4 (L=250)	WICK 4×4 (L=250)	1
57	10008091	油线 4×4 (L=40)	WICK 4×4 (L=40)	1
58	10008091	油线 (L=35)	WICK (L=35)	1
59	10008091	油线 (L=110)	WICK (L=110)	1
60	10008091	油线 (L=34)	WICK (L=25)	1
61	10008091	油线 (L=70)	WICK (L=70)	2
62	10013272	回油管固定架	OIL TUBE STAND	2
63	10010595	螺钉	SCREW	1
64	10013259	梭头下端毛毡架	SPACER	2
65	10013318	防尘盖	DUST PROTECTOR	1
66	10013598	防尘盖螺钉	SCREW, PAN SM3. 57-40×5	2
67	10013274	回油毛毡	OIL RETURN FELT BLOCK	1
68	10013281	回油毛毡固定架	FIXING STAND OF OIL RETURN FELT	1
69	10013448	中轴套后油封	OIL SEAL	1
70	10008091	油线 (L=480)	WICK (L=480)	1
71	10013683	下轴齿轮毛毡架	FELT PRESSER	2
72	10013598	下轴齿轮毡架螺钉	SCREW, PAN SM3. 57-40×5	2
73	10013289	油管勾板	TUBE SUPPRT BRACKET	1
74	10013269	油管勾板螺钉	SCREW, PAN SM3. 57-40×6	1
75	10013449	弹簧油管夹头	TUBE CLIP	7
76	20001068	油量调节器组件	OIL SUPPLYING ADJUSTER SETS	1
77	10008939	密封圈	SEAL	1
78	10013447	中轴套前油封	OIL SEAL	1
79	10008091	油线 (L=35)	WICK (L=35)	1
80	10010595	螺钉	SCREW	4
81	10013449	弹簧油管夹	TUBE CLIP	2
82	10013449	弹簧油管夹	TUBE CLIP	1
83	10010595	调节器安装螺钉	SCREW OF OIL SUPPLYING ADJUSTER	1
84	10008938	油窗	OIL SIGHT WINDOW	1
85	10013271	挑线杆油线架	OILTHREAD STAND OF LEVER	1
86	10013693	下轴齿轮毛毡	FELT	2
87	20001064	喷油槽组件	OIL SPRAY TUBE	1
88	10013255	右梭架底衬盖板	OIL SEAL R, SUB-TANK	1
89	10013263	左梭架底衬盖板	OIL SEAL L, SUB-TANK	1
90	10013291	右梭架底盖板衬垫	SUB-TANK COVER R	1
91	10013257	左梭架底盖板衬垫	SUB-TANK COVER L	1
92	20001086	喷油管组件	OIL SPRAY TUBE	1
93	10009037	螺钉	SCREW	2
94	10007800	滤油器输油管 (L=150)	OIL TUBE (L=150)	1
95	10007800	油泵输油管 (L=460)	OIL TUBE (L=460)	1
96	10007800	喷油管供油管架	OIL THREAD STAND	1
97	10013716	下轴中套油封	OIL SEAT, PLUNGER PUMP	1
98	10013265	油管过线板	TUBE SUPPRT BRACKET L	1
99	10013262	油管压线板	OIL TUBE SUPPORT	1
100	10013264	回油盒螺钉垫圈	WASHER	8
101	10013499	油管压板螺钉	SCREW, PAN SM4. 76-32×6	2
102	10007800	油管 (L=530)	OIL TUBE (L=530)	1
103	10013420	安装板	PLATE	1
104	10013223	安装板螺钉	SCREW	1
105	10013246	螺母	NUT GB6170-86-M4	1



Z1 附件部分/Accessories





序号 No.	件号 Pars No.	名称	Description	数量 Number
1		附件袋	ACCESSORY BAG	1
2	10010994	螺丝刀 (大)	SCREW DRIVER, 1.9×52	1
3	10010995	螺丝刀 (中)	SCREW DRIVER, 3.4×70	1
4	10013185	螺丝刀 (小)	SCREW DRIVER, 4.7×250	1
5	10009683	内六角扳手 (小)	HEXAGONAL WRENCH 2	1
6	10009685	内六角扳手 (大)	HEXAGONAL WRENCH 3	1
7	10036288	机针 DPX5 (#14)	NEEDLE DPX5 (#14)	4
8	10013653	梭芯	BOBBIN, ST	4
9	10013295	机头支柱	HEAD REST	1
10	10004399	机头罩	HEAD COVER	1
11	10013242	膝控提升顶杆组件	KNEE LIFER COMPLYING BAR	1
12	20001049	油盘组件	OIL PAN ASSY	1
12-1	10013241	油盘	OIL PAN	1
12-2	10054360	膝控铰链轴	KNEE LIFTER SHAFT	1
12-3	10006340	膝控限位架	KNEE LIFTER	1
12-4	10004961	膝控限位架螺钉	BOLT, SM5.95	1
12-5	10004962	膝控限位调节螺钉	SET SCREW, SM5.95	2
12-6	10004960	膝控限位调节螺母	NUT, SM5.95	3
12-7	10004963	膝控复位簧	TWIST SPRING	1
12-8	10002559	开口挡圈	RETAINING RING, E10	1
13	10004466	机头连接钩部件	HEAD CONNECTION HOOK COMPONENT	2
14	10011041	机头连接钩座	HEAD CONNECTION HOOK SEAT	2
15	10012159	机头座垫	HEAD CUSHION	4
16	10003889	油盘钉子	NAIL	8
17	10012158	机头防震钉垫	NOSE STUD CUSHION	4
18	10054706	小油壶组件	OILER ASSY	1
19	10060866	油壶	OILER	1
20	10009991	排油孔螺钉	OIL DRAINING SCREW	1
21	10009988	排油孔垫圈	OIL DRAIN WASHER	1
22	10013300	滤油块	OIL FILTER	1
23	10021674	上皮带护罩组件	BELT COVER ASSY	1
23-1	10006362	上皮带防护罩	BELT COVER COLLAR ASSY	1
23-1-1	10013316	上皮带防护罩橡胶圈	RUBBER COLLAR	4
23-2-1	10013296	上皮带防护罩固定螺钉	SCREW, PAN SM4.76-32×20	4
23-2-2	10013293	垫圈	WASHER, PLAIN L5	4
23-2-3	10013603	上皮带防护罩固定螺钉	SCREW, PAN SM4.37-40×8	1
23-2-4	10013297	垫圈	WASHER, PLAIN M 4.37	1
23-2-5	20003612	下皮带防护罩	LOWER-BELT SHIELD	1
23-2-6	10004309	下皮带防护罩螺钉	WOOD SCREW, ROUND M5.5×20	1
23-2-7	10012318	垫圈	WASHER, PLAIN S 5.56	2
23-3	10006361	防护罩盖板	BELT COVER COLLAR	2
23-4	10013302	防护罩垫圈	WASHER	4
24	10005710	膝控碰块配件	KNEE LIFTER ASSY	1
24-1	10002562	碰块弯杆接头组件	KNEE LIFTER JOINT ASSY	1
24-2	10003894	弯杆接头支头螺钉	BOLT, SM7.94	1
24-3	10003894	弯杆接头锁紧螺钉	BOLT, SM5.95×20	1
24-4	10005640	膝控碰块弯杆	KNEE LIFTER BAR	1
24-5	10003900	操纵杆垫	JOYSTICK PAD	1
24-6	10003897	操纵杆接头	JOYSTICK ADAPTER	1
24-7	10003894	六角头螺钉	HEXAGONAL HEAD SCREW, SM5.95	1
24-8	10004223	操纵板软垫	CONTROL BOARD CUSHION	1
25	10006516	支承板	HB SETTING PLATE #3	1
26	10013598	螺钉	SCREW, PAN SM4.37-40×12	3



Z2 附件部分/Accessories

序号 No.	件号 Pars No.	名称	Description	数量 Number
27-1	10008015	三线线架组件	COTTON STAND ASSY (3D)	1
27-1-1	10004291	线架下撑管	COLUMN PIPE (D)	1
27-1-2-1	10004290	线架下撑管垫圈	WASHER, PLAIN 16	2
27-1-2-2	10002985	线架下撑管螺母	NUT, 5/8	1
27-1-3	10004293	线架上撑管	COLUMN PIPE	1
27-1-4	10074309	撑管夹组件	COLUMN JOINT ASSY	1
27-1-4-1	10074306	撑管夹螺钉	SCREW, PAN M5×14	2
27-1-4-2	10002953	撑管夹螺母	NUT, 1 M5	1
27-1-5	10004282	线架上撑管套	COLUMN CAP	1
27-1-6	10006351	下过线架	SPOOL HOLDER 3	1
27-1-7-1	10004288	线轴	SPOOL SHAFT (B)	3
27-1-7-2	10003022	线盘弹簧垫圈	WASHER, SPRING 2-5	5
27-1-7-3	10002953	撑管夹螺母	NUT, 1 M5	2
27-1-7-4	10074307	撑管夹下螺钉	SCREW, PAN (P WASHER) M5×32	1
27-1-7-5	10074306	撑管夹上螺钉	SCREW, PAN (P WASHER) M5×14	2
27-1-8	10004299	线盘	SPOOL STAND BASE	3
27-1-9	10004281	线盘软垫	SPOOL MAT	3
27-1-10	10004287	线盘塑料压块	SPOOL PLASTIC PRESS BLOCK	3
27-1-11	10006345	上过线架	THREAD HANGER ASSY	1

Wa . 警告标志 / Warning labels

序号		名称	尺寸	代号
1		Label, operation Eng.	40×64	
2		危险标志 Mark, injury	L=16 R=0.8	
3		箭头标志 Mark, arrow	10 × 30	
4		接地标志 Mark, grounding	Ø12	

*请注意:由于产品改进,本手册内容可能会与实际购买的产品略有出入。



10006554

浙江中捷缝纫科技有限公司
ZOJE SEWING MACHINE CO.,LTD

地址:浙江省玉环市大麦屿街道兴港东路198号
ADD:DAMAIYU HING KONG ROAD NO.198,YUHUAN,
ZHEJIANG,CHINA

国内营销中心: Domestic Marketing center
TEL:0576-87338345 87338215 FAX:0576-87338222

国际营销中心: Oversea Marketing center
TEL:+86-576-87377013 87378896 FAX:+86-576-87338266
[Http://www.zoje.com](http://www.zoje.com) E-mail:export@zoje.com