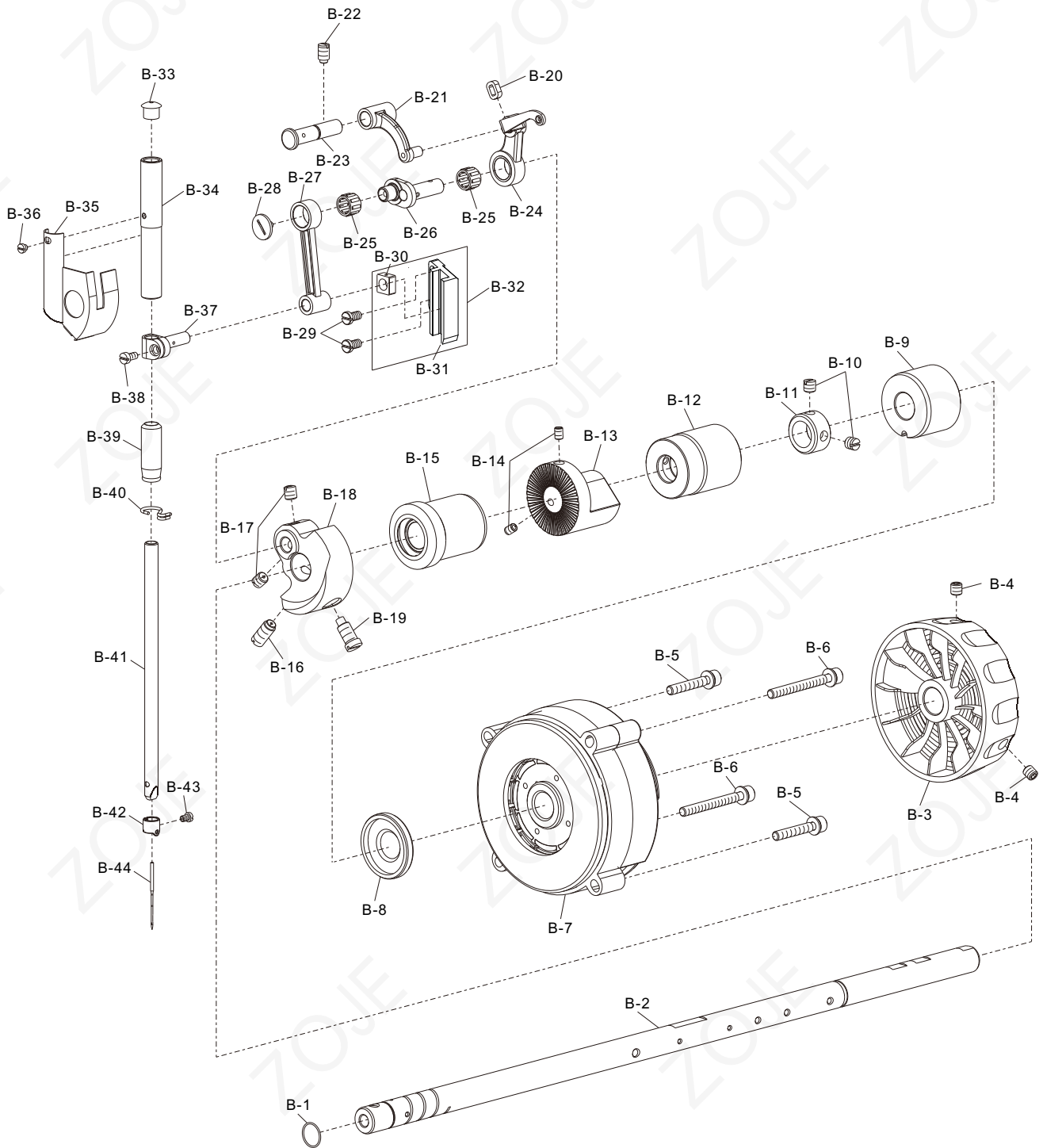


B

上轴、挑线分组件 Main Shaft & Thread Take-up Cover Components



B

上轴、挑线分组件

Main Shaft & Thread Take-up Cover Components

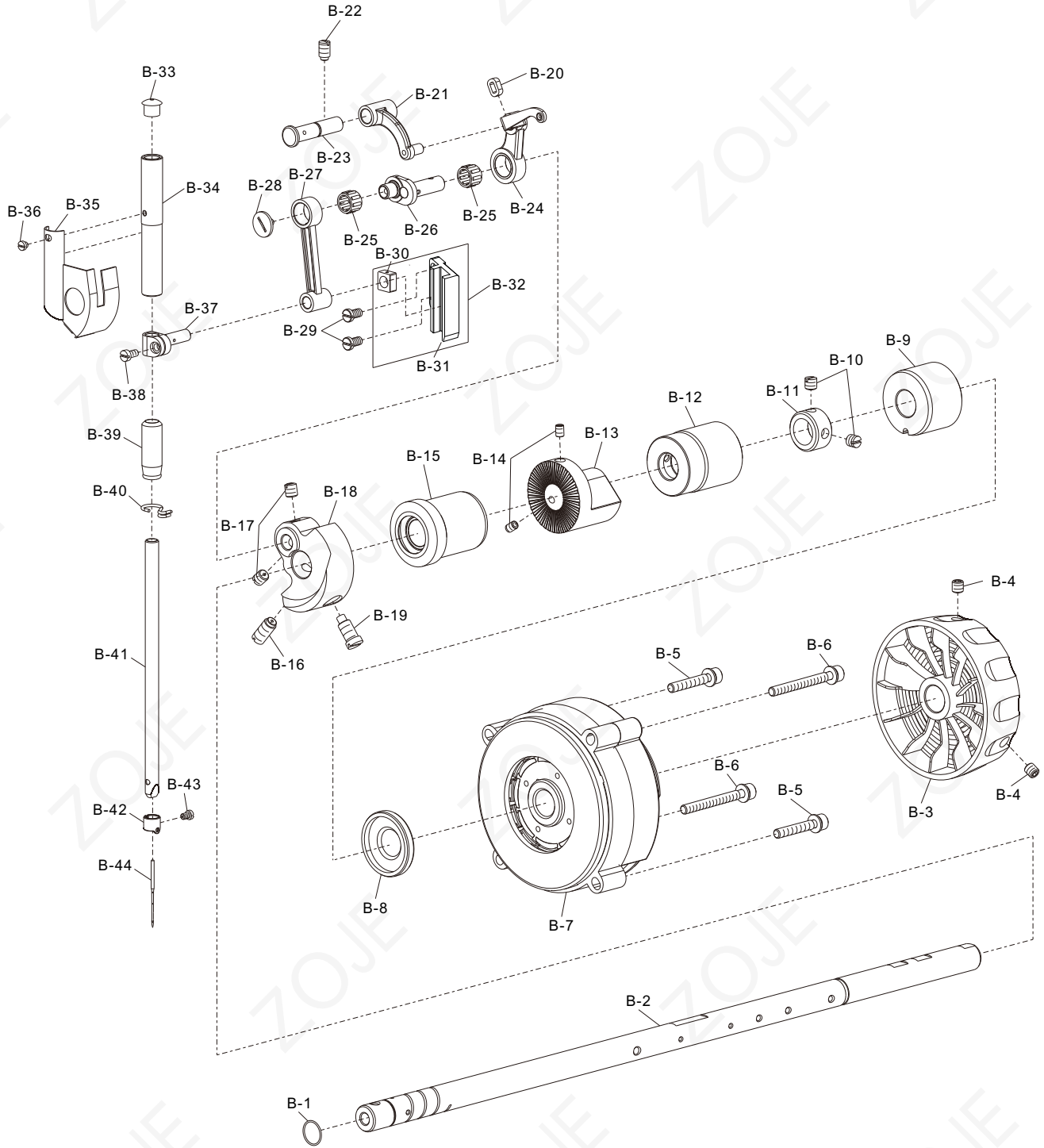
序号 Ref. No.	件号 Part No.	名称	Name of part	数量 QTY	备注 Remark
B-1	10008886	O形圈	O-ring	1	
B-2	10074547	上轴	Main shaft	1	
B-3	20030489	上轮	Head wheel	1	
B-4	10011232	M6×6螺钉	Screw M6×6	2	
B-5	10077958	M5螺钉组件	Screw M5 ASM.	2	
B-6	10077959	M5螺钉组件	Screw M5 ASM.	2	
B-7	10076434	分体电机组件	Motor ASM.	1	
B-8	10058049	油封	Oil seal	1	
B-9	10066834	上轴后轴套	Shaft sleeve	1	
B-10	10005020	SM1/4"×40螺钉	Screw SM1/4"×40	2	
B-11	10010542	挡圈	Thrust collar	1	
B-12	10007239	上轴中轴套	Shaft sleeve	1	
B-13	10074614	绕线主动轮	Driving wheel	1	
B-14	10041529	SM3/16"×28螺钉	Screw SM11/64"×40	2	
B-15	10055615	上轴前轴套	Shaft sleeve	1	
B-16	10010082	SM9/32"×28螺钉	Screw SM9/32"×28	1	
B-17	10010065	SM1/4"×40螺钉	Screw SM1/4"×40	2	
B-18	10012203	针杆曲柄	Crank	1	
B-18	10012858	针杆曲柄	Crank	1	5
B-19	10010545	针杆曲柄定位螺钉	Screw	1	
B-20	10010539	挑线杆防油圈	Oil resistant cover	1	
B-21	10010535	挑线连杆	Connecting rod	1	
B-22	10010083	SM15/64"×28螺钉	Screw SM15/64"×28	1	
B-23	20019236	挑线连杆销组件	Pin ASM.	1	
B-24	10038474	挑线杆	Thread take-up lever	1	
B-24	10004158	挑线杆	Thread take-up lever	1	S7
B-25	10014107	K8×12×7.8滚针轴承	Needle bearing K8×12×7.8	2	
B-26	10004144	挑线曲柄部件	Crank ASM.	1	
B-26	10005937	挑线曲柄部件	Crank ASM.	1	5
B-27	10062407	针杆连杆	Connecting rod	1	
B-28	10010537	挑线曲柄左旋螺钉	Screw	1	
B-29	10043360	滑块导轨螺钉	Screw	2	
B-30	10052734	针杆连接柱滑块	Sliding block	1	
B-31	10052733	滑块导轨	Slide guide	1	
B-32	10054365	滑块导轨组件	Slide guide ASM.	1	
B-33	10010587	橡胶塞	Rubber plug	1	
B-34	10011063	针杆上轴套	Shaft sleeve	1	
B-35	10062045	面部防油板部件	ARM oil shield ASM.	1	
B-36	10005558	SM1/8"×44螺钉	Screw SM1/8"×44	1	
B-37	10052735	针杆连接柱	Joint pin	1	
B-38	10030286	SM9/64"×40螺钉	Screw SM9/64"×40	1	
B-39	10014117	针杆下轴套	Shaft sleeve	1	
B-39	10005916	针杆下轴套	Shaft sleeve	1	5
B-40	10005943	针杆下套线钩	Thread guide	1	
B-41	10008825	针杆	Needle bar	1	
B-41	10041609	针杆	Needle bar	1	5
B-42	10010588	SM1/8"×44螺钉	Screw SM1/8"×44	1	

“*” 具体内容需向客服咨询

“**” Specific content need to consult customer service

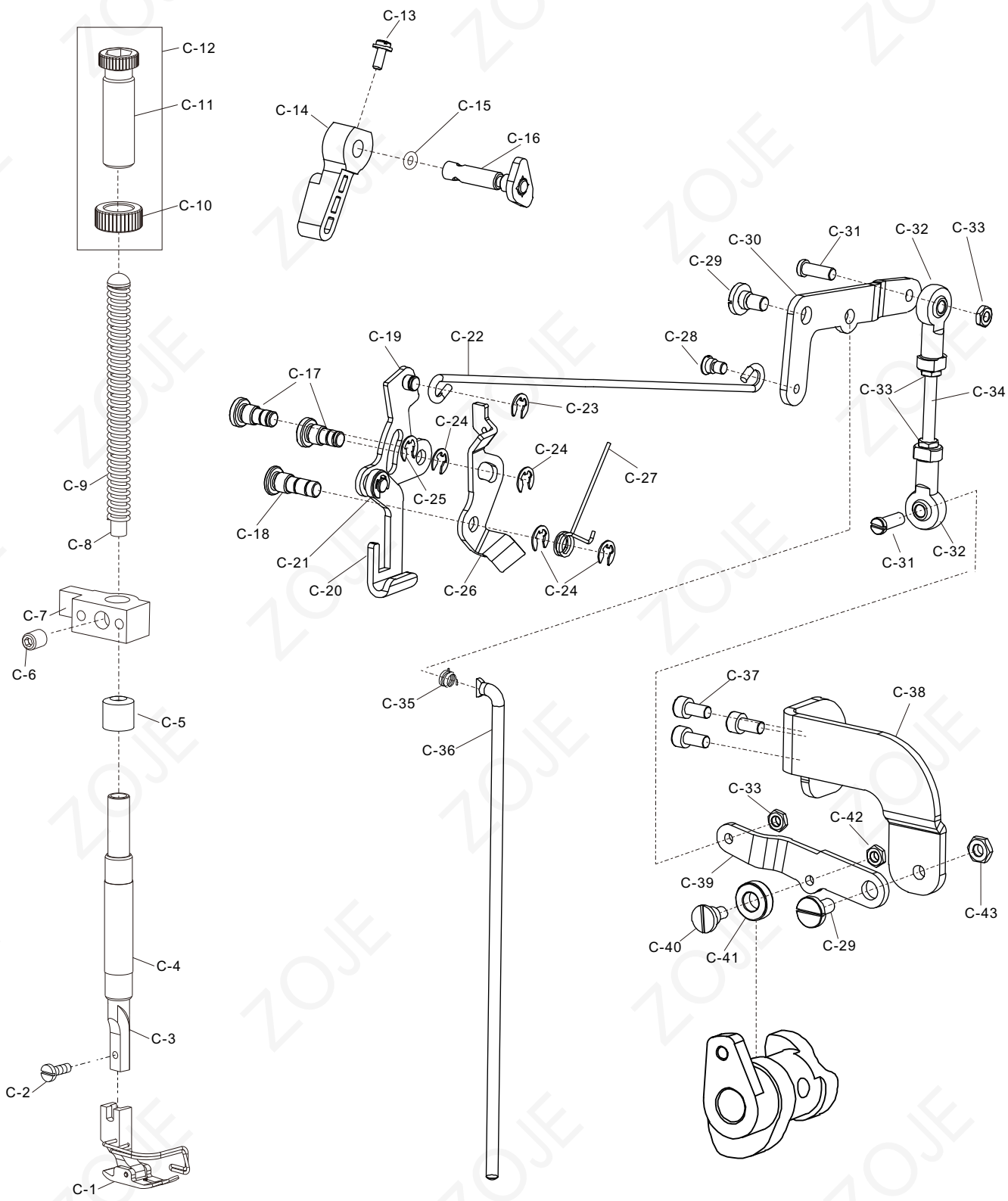
B

上轴、挑线分组件 Main Shaft & Thread Take-up Cover Components



C

抬压脚分组件 Hang Lifter & Tension Release Components





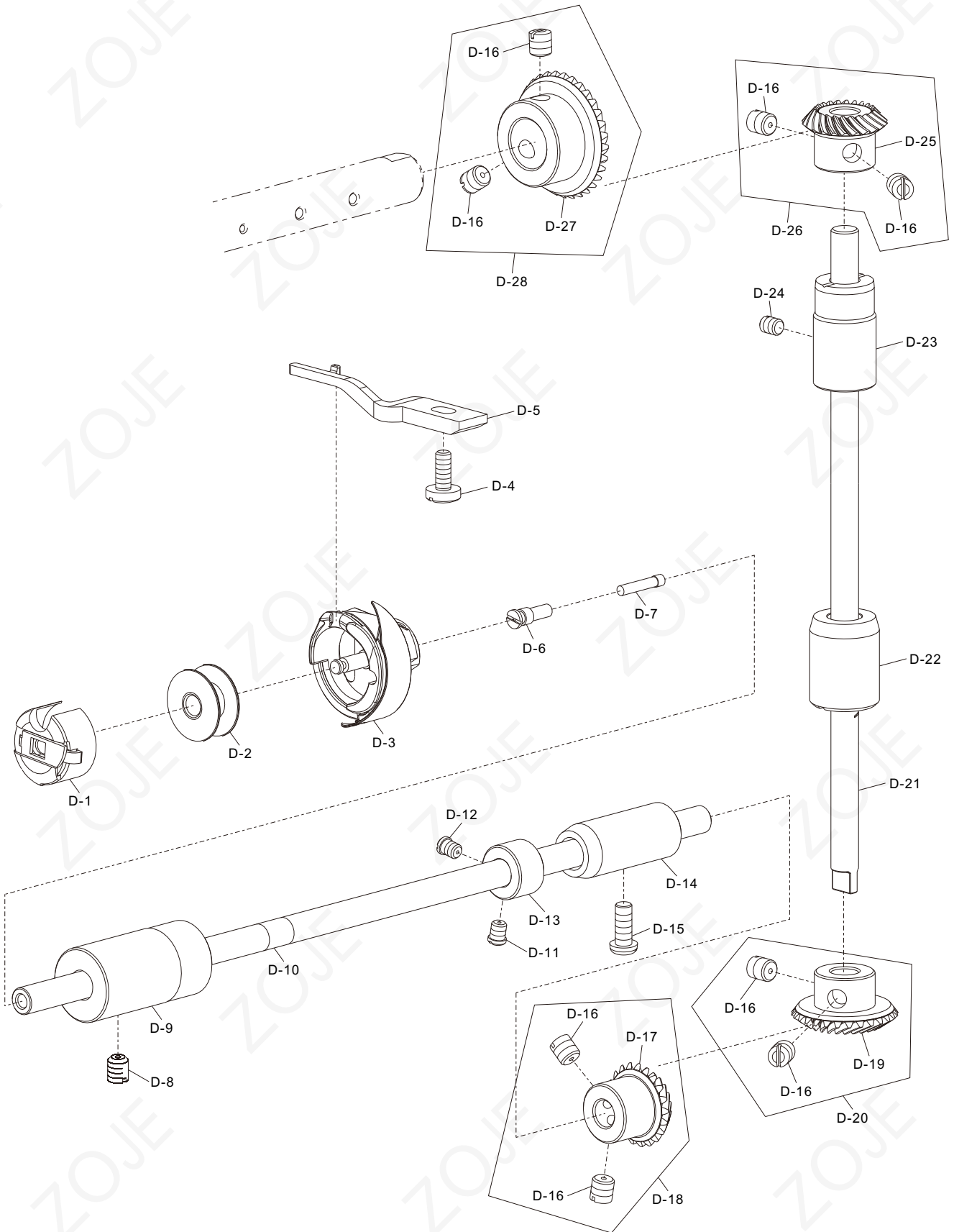
抬压脚分组件
Hang Lifter & Tension Release Components

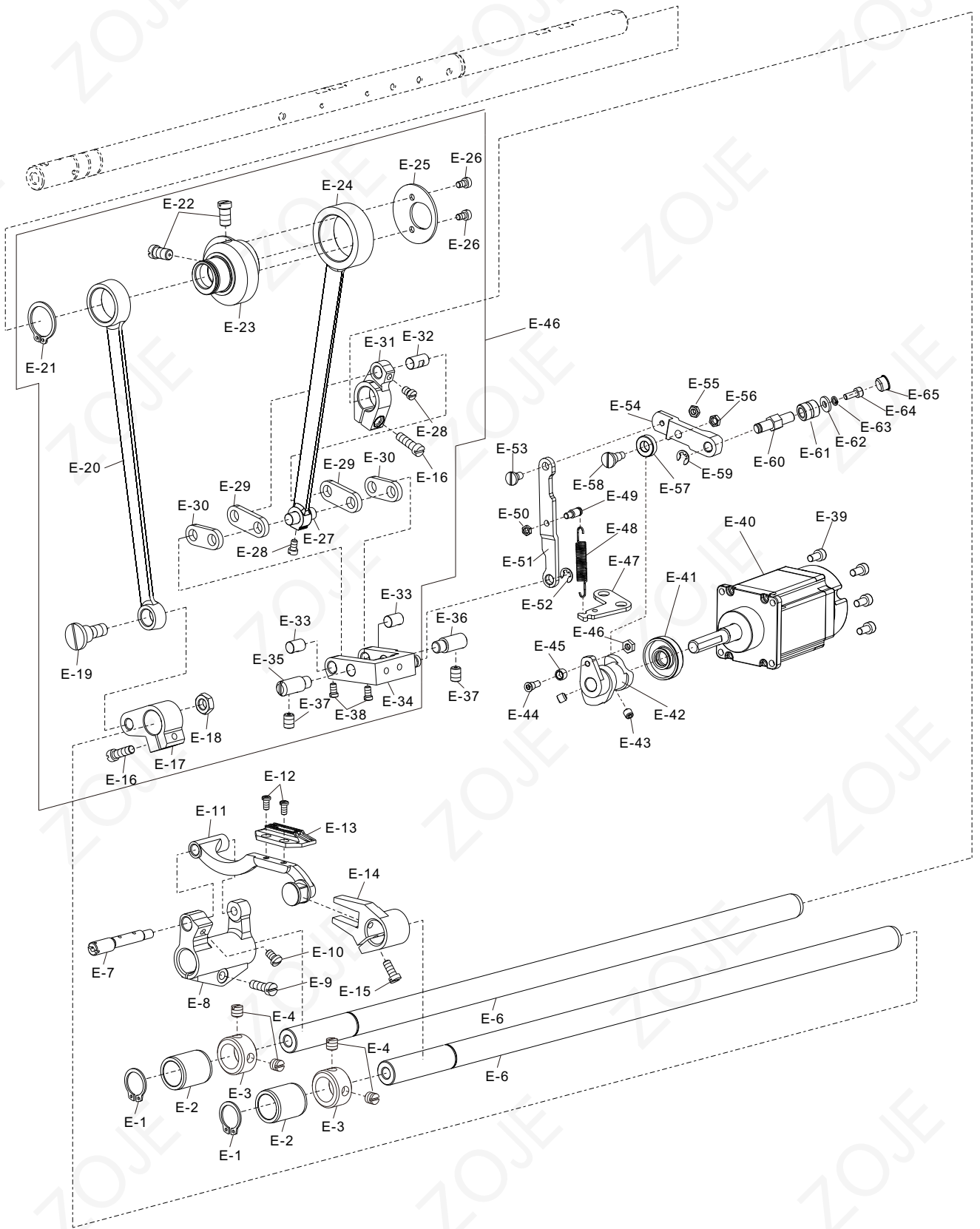
序号 Ref. No.	件号 Part No.	名称	Name of part	数量 QTY	备注 Remark
C-1	10052532	压脚组件	Presser foot ASM.	1	
C-1	10005982	压脚组件	Presser foot ASM.	1	-5/H
C-2	10010650	SM9/64"×40螺钉	Screw SM9/64"×40	1	
C-3	10010646	压杆	Presser bar	1	
C-4	10005915	压杆轴套	Shaft sleeve	1	
C-5	10066598	压紧杆防油罩	Oil protector cover	1	
C-6	10003921	SM1/4"×40螺钉	Screw SM1/4"×40	1	
C-7	10008843	压杆导架	Presser guide bar bracket	1	
C-8	10004439	调压导杆	Presser guide bar	1	
C-9	10004473	调压弹簧	Spring	1	
C-10	10062022	调压螺母	Nut	1	
C-11	10062021	调压螺钉	Screw	1	
C-12	10062052	调压螺钉组件	Screw ASM.	1	
C-13	10010016	SM9/64"×40螺钉	Screw SM9/64"×40	1	
C-14	10062023	压脚扳手	Hand lifter	1	
C-15	10010027	3.68×1.78 O形圈	O-ring 3.68×1.78	1	
C-16	10008826	压脚扳手凸轮部件	Hand lifter CAM ASM.	1	
C-17	10010653	销	Screw	2	
C-18	10010022	销	Screw	1	
C-19	10008874	抬压脚前杠杆部件	Lifting lever connecting rod	1	
C-20	10010648	压脚升降板	Lifting lever	1	
C-21	10010026	5×0.6挡圈挡圈	Closing ring 5×0.6	1	
C-22	10078148	抬压脚拉杆	Lifting lever connecting rod	1	
C-23	10061689	5.1×0.6挡圈	Closing ring 5.1×0.6	1	
C-24	10013038	5挡圈	Closing ring 5	4	
C-25	10032042	挡圈	Closing ring	1	
C-26	10074011	松线顶板	Tension release plate	1	
C-27	10010647	复位簧	Spring	1	
C-28	10010651	SM3/16"×32螺钉	Screw SM3/16"×32	1	
C-29	10010652	后杠杆轴位螺钉	Screw	2	
C-30	10091714	抬压脚后杠杆	Lifting lever link components	1	
C-31	10037250	螺钉	Screw	2	
C-32	10011586	万能接头组件		2	
C-33	10010133	M5×3.8螺母	Nut M5×3.8	2	
C-34	10000547	螺钉	Screw	1	
C-35	10009205	弹簧	Spring	1	
C-36	10010020	抬压脚顶杆	Connecting rod vertical	1	
C-37	10000134	M5×10螺钉	Screw M5×10	3	
C-38	10078153	抬压脚支撑板		1	
C-39	10078151	抬压脚顶板		1	
C-40	10078152	螺钉	Screw	1	
C-41	10003534	688ZZ轴承		1	
C-42	10003032	M6螺母	Nut M6	1	
C-43	10012625	SM15/64"×28螺母	Screw SM15/64"×28	1	

“*” 具体内容需向客服咨询
“**” Specific content need to consult customer service

D

勾线分组件 Hook Of Driving Shaft Components





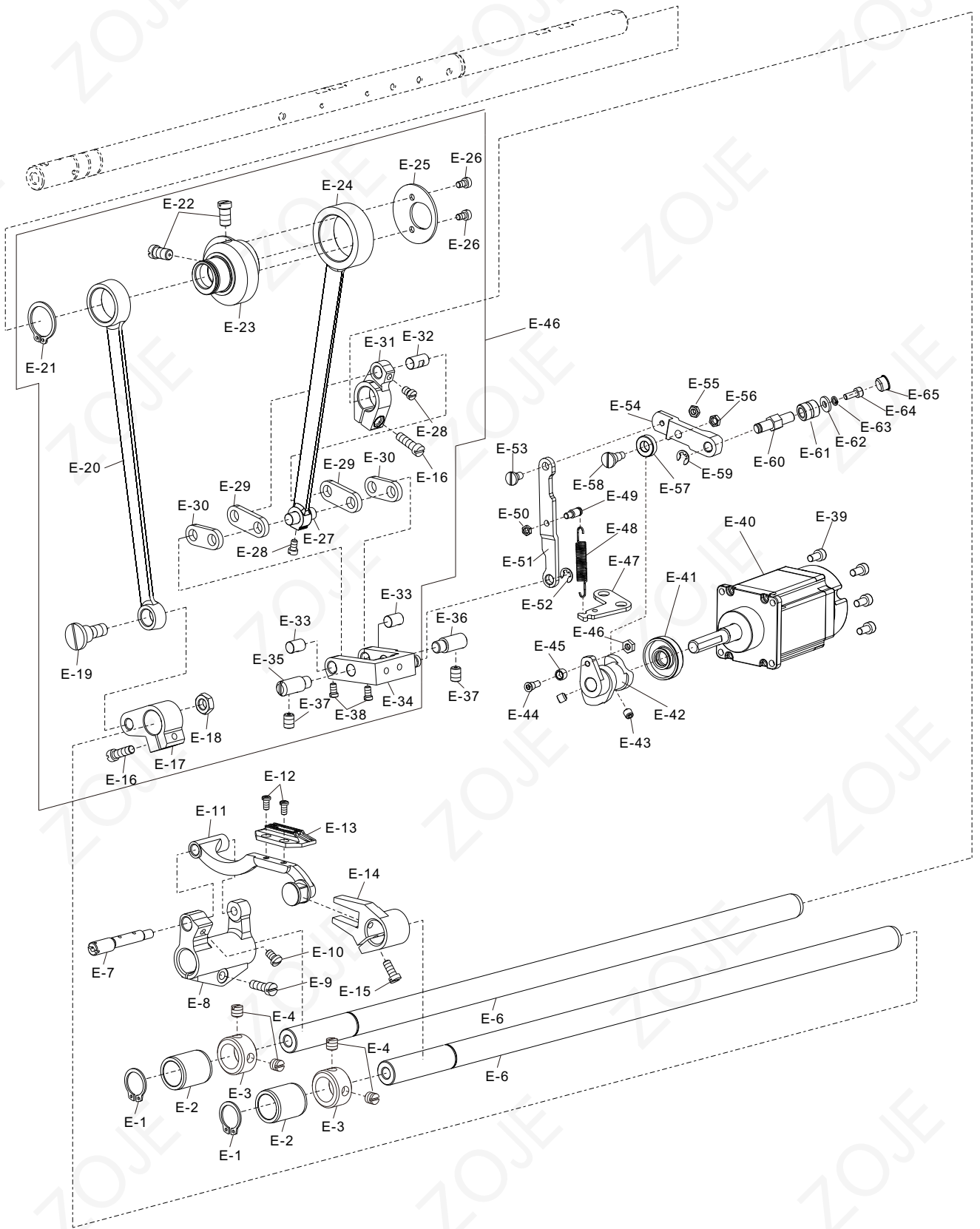
E

送料分组件
Feed Mechanism Components

序号 Ref. No.	件号 Part No.	名称	Name of part	数量 QTY	备注 Remark
E-1	10010090	13.8×1挡圈	Closing ring 13.8×1	2	
E-2	10014116	送料拾牙轴轴套	Shaft sleeve	2	
E-3	10010542	挡圈	Thrust collar	2	
E-4	10005020	SM1/4"×40螺钉	Screw SM1/4"×40	4	
E-5	10010097	拾牙轴	Feed driving shaft	1	
E-6	10010073	送料轴	Feed rocker shaft	1	
E-7	10004440	牙架座偏心销	Pin	1	
E-8	10004474	牙架座	Feed bar driving crank	1	
E-9	10004993	SM3/16"×28螺钉	Screw SM3/16"×28	1	
E-10	10010074	SM11/64"×40螺钉	Screw SM11/64"×40	1	
E-11	10070000	牙架部件	Feed bar ASM.	1	
E-12	10010099	SM1/8"×44螺钉	Screw SM1/8"×44	2	
E-13	10052531	送料牙	Feed dog	1	
E-13	10026357	送料牙	Feed dog	1	S7
E-13	10007322	送料牙	Feed dog	1	-5
E-13	10038413	送料牙	Feed dog	1	H
E-14	10010100	拾牙叉形曲柄	Crank	1	
E-14	10030200	拾牙叉形曲柄	Crank	1	S7/H
E-15	10004628	SM11/64"×40螺钉	Screw SM11/64"×40	1	
E-16	10010095	SM3/16"×28螺钉	Screw SM3/16"×28	2	
E-17	10010086	拾牙后曲柄	Crank	1	
E-18	10004475	SM9/32"×28螺母	Nut SM9/32"×28	1	
E-19	10010091	拾牙连杆轴位螺钉	Screw	1	
E-20	10074007	拾牙连杆	Connecting rod	1	
E-21	10010089	18.5×1.2挡圈	Closing ring 18.5×1.2	1	
E-22	10010092	SM1/4"×40螺钉	Screw SM1/4"×40	2	
E-23	10010115	送料偏心轮	Feed drive eccentric cam	1	
E-23	10005991	送料偏心轮	Feed drive eccentric cam	1	S7/H
E-24	10073955	送料连杆	Connecting rod	1	
E-24	10006004	送料连杆	Connecting rod	1	S7/H
E-25	10010098	送料偏心轮盖板	Thrust cover	1	
E-25	10005992	送料偏心轮盖板	Thrust cover	1	S7/H
E-26	10010643	SM9/64"×40螺钉	Screw SM9/64"×40	2	
E-27	10010069	送料连杆销	Pin	1	
E-28	10010071	SM9/64"×40螺钉	Screw SM9/64"×40	2	
E-29	10010068	送料长摆动板	Connecting plate	2	
E-30	10010075	送料短摆动板	Connecting plate	2	
E-31	10010076	送料曲柄	Crank	1	
E-32	10010096	送料曲柄销	Pin	1	
E-33	10010087	短摆动板连接销	Pin	2	
E-34	10005989	送料摆动板座部件	Feed adjusting ASM.	1	
E-35	10010102	送料摆动板座右销	Pin	1	
E-36	10058783	送料摆动板座右销	Pin	1	
E-37	10010678	SM15/64"×28螺钉	Screw SM15/64"×28	2	
E-38	10010197	SM9/64"×40螺钉	Screw SM9/64"×40	2	

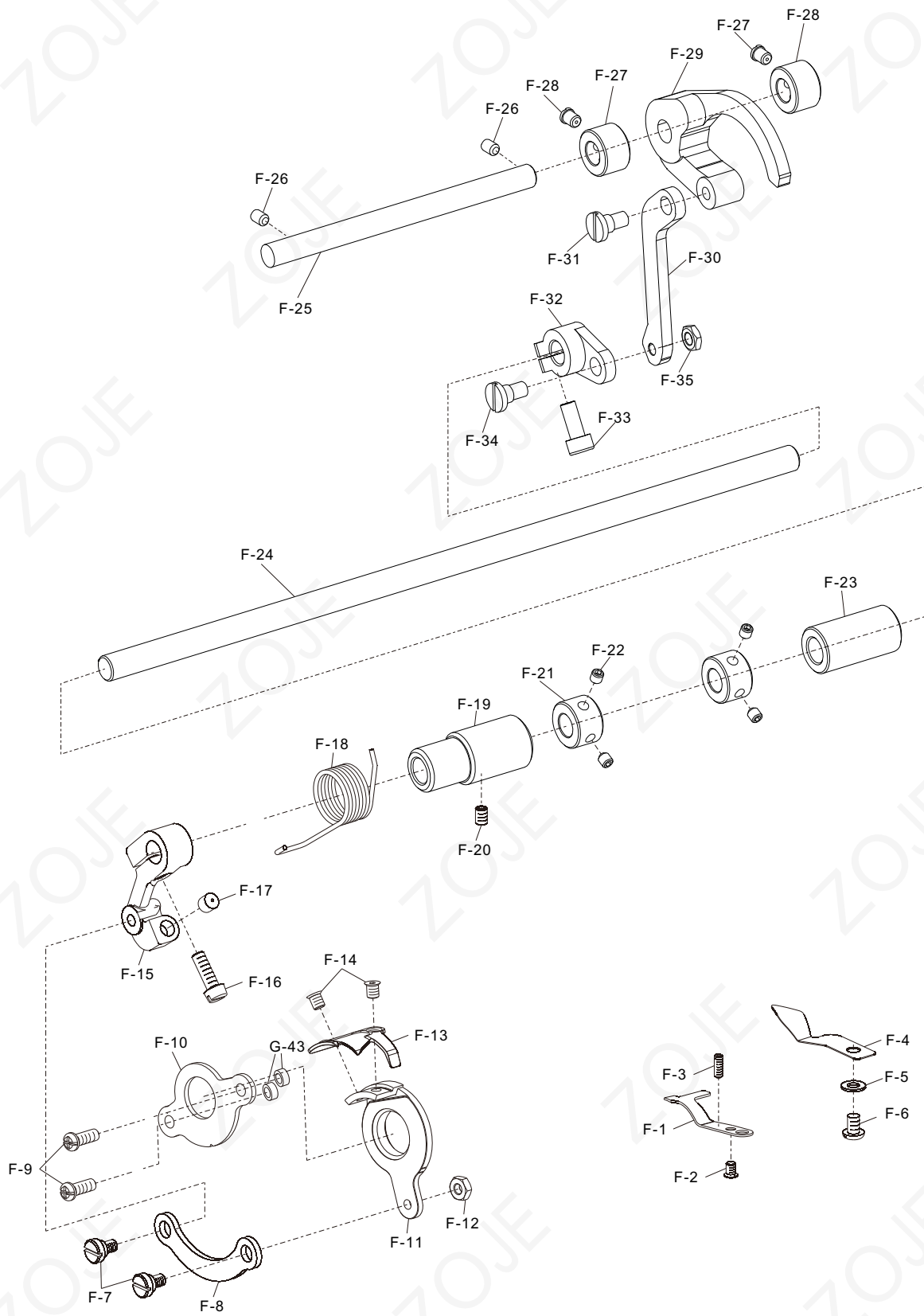
“*” 具体内容需向客服咨询

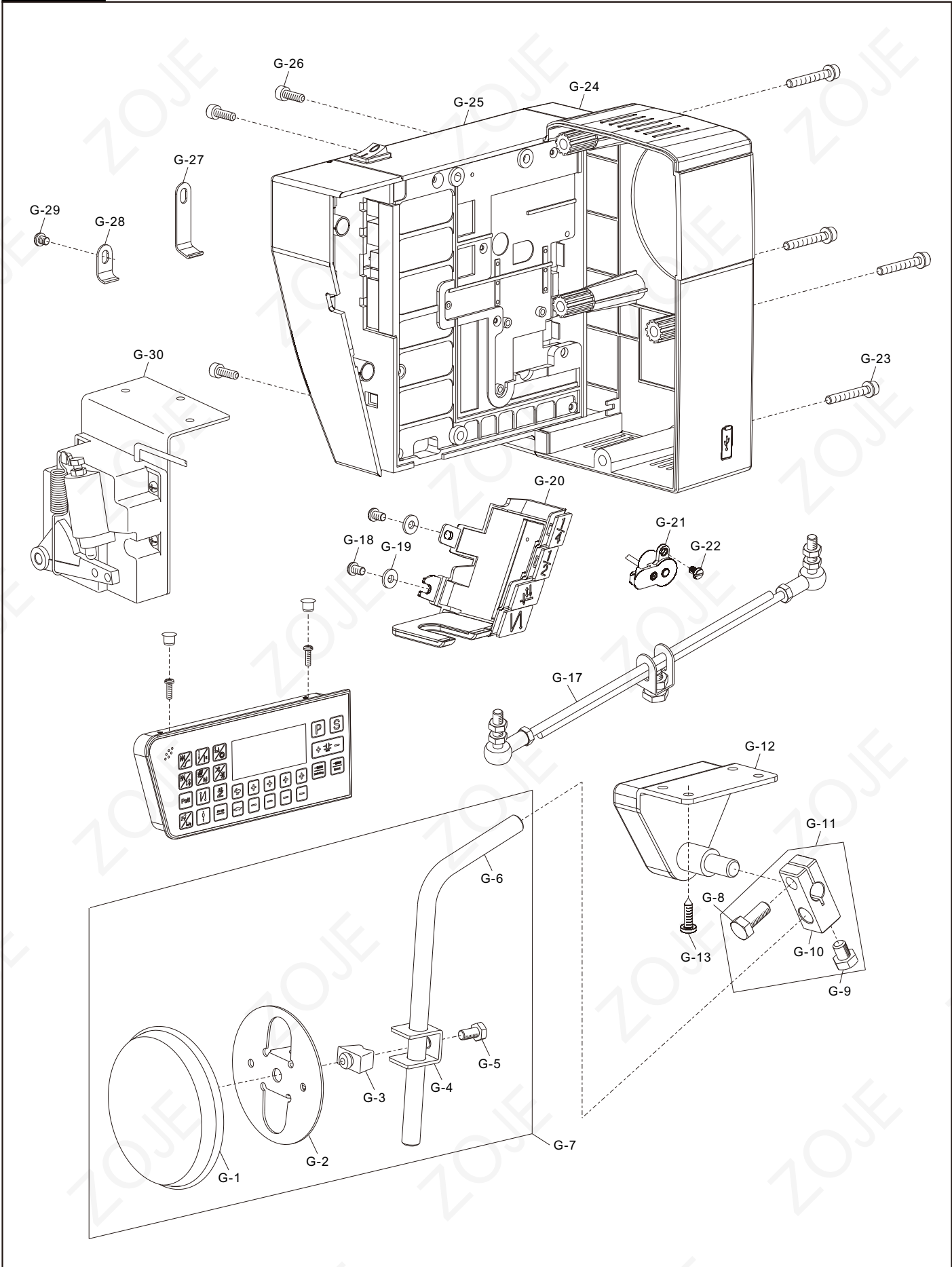
“**” Specific content need to consult customer service



F

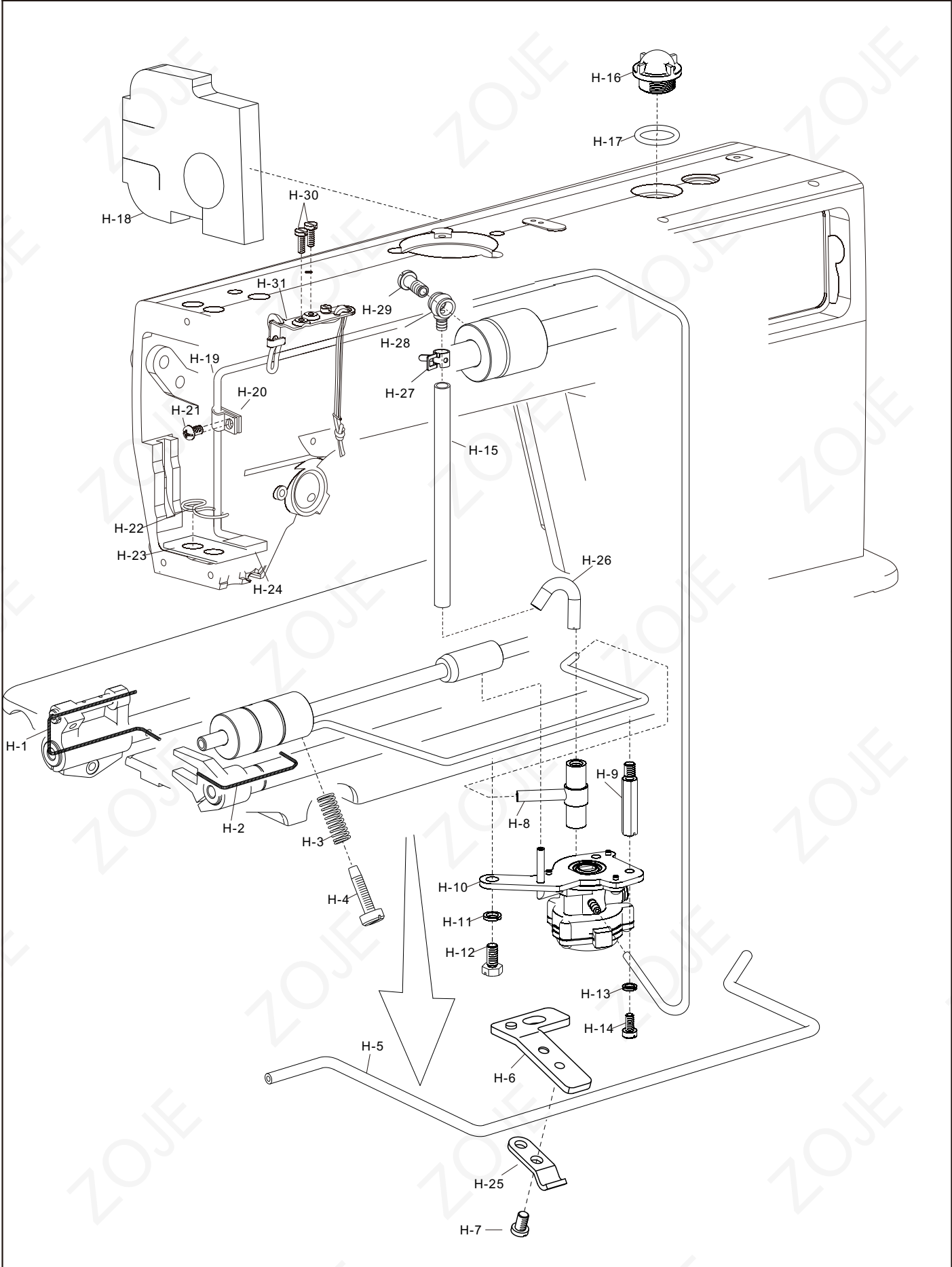
剪线分组件 Thread trimmer Components







润滑分组件
Lubrication Components



油盘、膝抬压脚分组件

Presser Foot Components Of Oil Plate Knee Lift

